



## Full Stainless Steel Vibration-Resistant Pressure Gauge



Full Stainless Steel Vibration-Resistant  
Pressure Gauge  
Order Number : MT13304121

### Application:

The vibration-proof Pressure gauge is applied to the occasion with dynamic load and vibration or to measure the pressure of gas and liquid which can not corrode copper alloy. It is widely used in machinery, petroleum, chemical, metallurgical, mining, and electric power sector. Measuring the pressure of the high corrosion media, the material should be stainless steel-vibration-proof and anti-corrosive (such as Acid, alkali, ammonia).



Full Stainless Steel Vibration-Resistant  
Pressure Gauge  
Order Number : MT13315721

### Parameters:

Dia:

60mm、 100mm、 150mm

Working pressure :

The pressure gauge should not exceed 3/4 of the maximum scale value under steady pressure and not exceed 2/3 of the maximum scale value under fluctuation pressure and not exceed 1/3 of the maximum scale value under short-time pressure.

Connection Thread:

M14×1.5、 M20×1.5,  
PF(PT、 NPT)1/4 ,FF(PT、 NPT)1/2

Damping Liquid :

Methyl-silicone

Bourdon tube:

sus304 or sus316

Connection material:

sus304 or sus316

Welding way :

TIG

SUS304

Movement :

SUS304

Class:

PC, stellite, double pane safety glass



Full Stainless Steel Vibration-Resistant  
Pressure Gauge  
Order Number : MT13320121



## Operation

- With a sharp pressure changes or vibration environment. Plus environment protection device shall be added.
- The pressure gauge must be installed vertically and tightened by a wrench.
- Measurement of oxygen, acetylene, hydrogen, or other combustible gas should be chosen with ban oil logo pressure gauge.
- Pressure gauges shall be horizontal or vertical installation.
- Measurement with explosion danger, easy to crystallization, easy solidified, corrosion resistance requirements, special medium measuring instrument should be used.
- The pressure gauge is to be used at an ambient temperature between  $-35^{\circ}\text{C} \sim +70^{\circ}\text{C}$  with a relative humidity not exceeding 85% (close to the lowest temperature will affect the normal work of the instrument).

## Model Number Codes

Any special requirements pls confirm with technician.

MT



Vibration-proof  
pressure gauge

-

1

DIA

$\Phi 60\text{mm}$   
 $\Phi 100\text{mm}$   
 $\Phi 150\text{mm}$

2

Way to Install

Blank-bottom  
Z-back  
ZT-back and flange

H

Full Stainless steel

## Pressure range . Accuracy

DIA	Pressure Range (%)	Accuracy	Connection thread
MT-60H(Z/ZT)	0~ (0.16/0.25/0.4/0.6/1/1.6/2.5/ 4/6/10/16/25/40/60) -0.1~ (0.15/0.3/0.5/0.9/1.5/2.4)	2.5	M14×1.5
MT-100H(Z/ZT) MT-150H(Z/ZT)	0~ (0.1/0.16/0.25/0.4/0.6/1/1.6/2.5/ 4/6/10/16/25/40/60/100) -0.1~ (0/0.15/0.3/0.5/0.9/1.5/2.4)	1.6	M20×1.5



## Size

unit: mm

Model	D	D0	D1	D2	n	t	h	f	c	d	d1	SW
MT-60H	63	-	72	-	-	34	53	14	3	-	5	15
MT-60ZH	63	-	72	-	-	32	20	14	3	-	5	15
MT-60ZTH	60	72	67	84	-	30	20	14	3	5	5	15
MT-100H	100	-	98	-	-	35	87	20	3	-	6	22
MT-100ZH	100	-	98	-	30	42	35	20	3	-	6	22
MT-100H	101	-	99	-	-	50	87	20	3			22
MT-100ZTH	100	118	98	134	30	42	35	20	3	6	6	22
MT-150H	150	-	148	-	-	45	112	20	3	-	6	22
MT- 150H	150	-	147	-	-	50	112	20	3	-	6	22
MT-150ZTH	160	165	148	182	30	65	35	20	3	6	6	17

## Demo Mode

MT - 100 / H / 0~1MPa / M20×1.5

Model

DIA

Stainless steel  
Material

Pressure range

Connection thread

\* S.S shock-proof pressure gauge, bottom connection, pressure range: 0~1MPa,  
thread M20\*1.5 Model will be quickly chosen if medium and installation is provided.

## Order Remarks

Model

/

DIA

/

Installation

/

Pressure  
Range

/

Connection  
thread

## Safety Warning

To be safe, please choose the right type of product. Wrong choice of product or improper use will likely result in property damage or personal injury. The system designer and the user shall be fully responsible for choosing the right products and use the product in the correct way.



## Precision Pressure Gauge



Precision Pressure Gauge  
Order Number:MT53115114



Precision Pressure Gauge  
Order Number:MT53121714



Precision Pressure Gauge  
Order Number:MT53322114

### Application:

Precision pressure gauge is mainly used to check the general pressure gauge and used for precise measurement pressure which do not corrode copper and its alloy liquid, gas, also can be used to pressure measuring instruments and meters and other kind of instrument calibration and test which is a certain function relation.

### Theory:

Precision pressure gauge is made of measuring system (including joint, wave tube, etc.), drive mechanism (including rod, gear transmission mechanism), indicating device (including a pointer and dial) and the shell (including casing, lining and table glass), the elastic element is through special craft processing, cooperate with special machine core components, combination of both. Precision pressure gauge works theory is that when the measured medium pressure acting on the elastic element makes it produce elastic deformation displacement, amplified by rod drive transmission mechanism, the measured pressure by indicating device instructions.

### Parameters:

Dia: 150mm

Accuracy : 0.4%、0.25%

Working pressure :

The pressure gauge should not exceed 3/4 of the maximum scale value under steady pressure and not exceed 2/3 of the maximum scale value under fluctuation pressure and not exceed 1/3 of the maximum scale value under short-time pressure.

Protection : IP 65 (with oil)

Pressure range : 0.1 ~ 60MPa

Connection thread: M20×1.5

Elastic component:  
Qsn8-0.3 brass, stainless steel

Connection : copper alloy

Movement : copper alloy

Casing:  
08F spray plating, aluminum alloy die-casting

Glass:  
common glass or pc glass





## Manual

- Carefully reading manual before using.
- With a sharp pressure changes or vibration environment, environment protection device shall be added.
- The pressure gauge must be installed vertically and tightened by a wrench.
- Measurement of oxygen, acetylene, hydrogen, or other combustible gas should be chosen with ban oil logo pressure gauge.
- Pressure gauges shall be horizontal or vertical installation.
- Measurement with explosion danger, easy to crystallization, easy solidified, corrosion resistance requirements, special medium measuring instrument should be used.
- If the environment temperature influence deviates from its  $20 \pm 3^\circ\text{C}$ , temperature must be taken into consideration the additional error  $0.4\% / 10^\circ\text{C}$ .

## Model Number Codes

Any special requirements pls confirm with technician.

MT



Precision  
pressure  
gauge

N

-

1

2

Oil filled and shock-proof

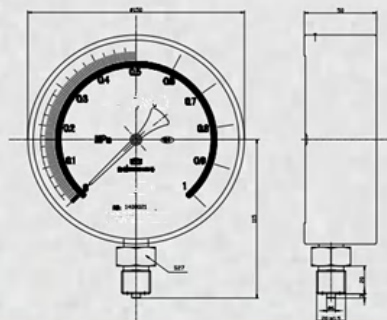
DIA

Installation

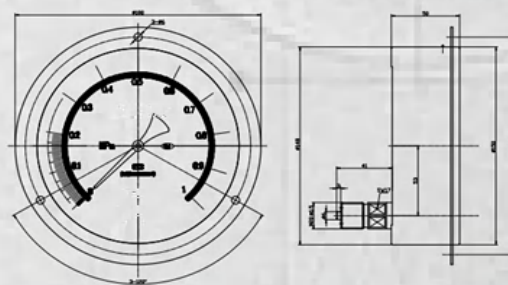
$\Phi 150\text{mm}$

ZT back& flange  
blank-bottom

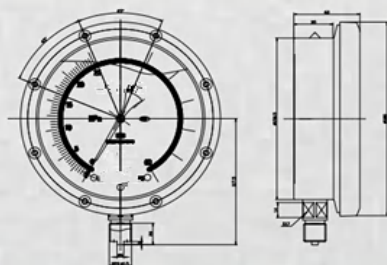
## Boundary Dimension



Bottom



Back & front flange



Bottom with oil filled



Demo mode

MT - 150 0~1MPa / M20×1.5 / 0.4%

Model - Dia pressure range / connection thread / accuracy

\* precision pressure gauge, 150mm bottom connection, pressure range: 0~1MPa, thread M20\*1.5  
Accuracy: 0.4%

Order Remarks

Model

/

DIA

/

Installation

/

Pressure  
Range

/

Connection  
thread

Safety Warning

To be safe, please choose the right type of product. Wrong choice of product or improper use will likely result in property damage or personal injury. The system designer and the user shall be fully responsible for choosing the right products and use the product in the correct way.



## Diaphragm-Seal Pressure Gauge



Flange MF3/sanitary MC  
Order Number:MT65306111MF3  
MT65306111MC



Common thread type/split thread type  
Order Number:MT65311111  
MT65312111



I-shaped flangeMF1/MF2  
Order Number:MT66310111MF1  
MT66311111MF2

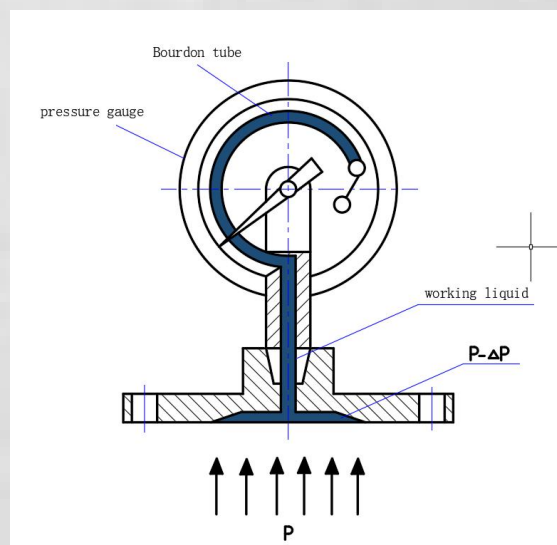
### Application :

Diaphragm pressure gauge is widely used in the process of petroleum, chemical, alkali production, chemical fiber, pharmacy, food, textile industries; suitable for measuring the corrosive, high temperature, high viscosity, easy to crystallization, easy to solidification and solid floating medium pressure, and for some measurement medium which cannot be used directly into the universal pressure gauge and the place where the clean to prevent precipitation pressure detection, diaphragm separator and universal pressure gauge must be used to form a system of diaphragm table.

### Theory :

When measuring the pressure of medium P acts on the diaphragm, diaphragm deformation, compression pressure gauge sealing fluid pressure system, make its forming P- $\Delta$ P stress, when the diaphragm of the rigid enough hours, the  $\Delta$ P are also small, pressure meter pressure system formed nearby for measuring the pressure of medium.

### Working theory :





## Operation

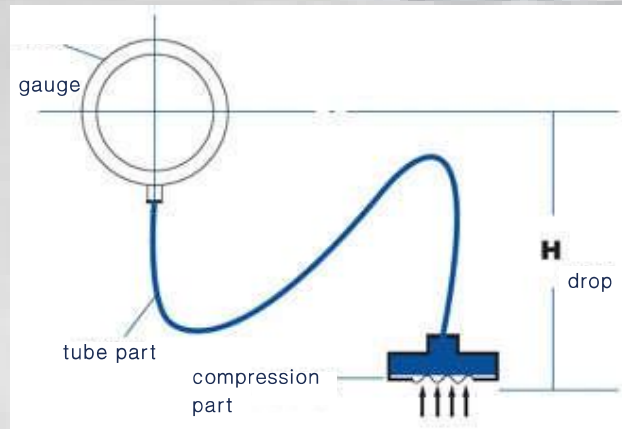
- The pressure gauge must be installed vertically and tightened by a wrench.
- Pressure gauges shall be horizontal or vertical installation.
- The model selection should match the medium and instrument material.
- The ambient temperature between  $-40^{\circ}\text{C}\sim+70^{\circ}\text{C}$  with a relative humidity not exceeding 85%.

## Liquid level

Especially for diaphragm pressure gauge with hose connection, due to the different position of compression zone and the universal pressure gauge, liquid level difference will be caused as shown in the figure below  $\Delta P$



$$\Delta P = d \times H$$

d: The proportion of sealing liquid  
H: liquid level difference



## Model Number Codes

Any special requirements pls confirm with technician.

  Diaphragm-seal Pressure Gauge (general gauge)	MT	-	1	2	H	3
			DIA	Installation	Material-s.s	Installation
			$\Phi 100\text{mm}$ $\Phi 150\text{mm}$	blank-bottom		ML thread type MF1 I flange MF2 unfold flange MF3 Angel flange MF4 Rose connection flange (rose length ma*3m) MC sanitary (clamp)

## Pressure range、Accuracy

Model	Pressure range (MPa)	Accuracy (%)
MT -100 MT -150	0~ (0.1/0.16/0.25/0.4/0.6/1/1.6/2.5/4/6/10/16/25)	1.6



## Diaphragm pressure gauge's temperature

Diaphragm pressure gauge's temperature is related with sealing liquid membrane expansion coefficient stiffness and pressure parts temperature. In the use of temperature deviation  $20 \pm 5^\circ\text{C}$ , changing rate of maximum value affected by the temperature is not greater than  $0.1\%^\circ\text{C}$ , flexible takes (far) is not greater than  $0.1 + 0.025\%$  (L - transmitting pressure conduit length m), appropriate sealing work fluid is chosen according to the use of different environment.

## Sealing liquid

Sealing liquid choice for reliability and safety, suitable liquid is chosen according to purposes.

Sealing Liquid	Temperature Range	Specific Weight $\text{g/cm}^3$	volume coefficient $1/^\circ\text{C}$	Use
Heavy viscous	$-10 \sim 200^\circ\text{C}$	1.07	$0.95 \times 10^{-3}$	high temperature
low viscous silicone	$-30 \sim 100^\circ\text{C}$	0.94	$1.08 \times 10^{-3}$	general use
glycerin solution	$-5 \sim 100^\circ\text{C}$	1.27	$0.61 \times 10^{-3}$	food use

## Corrosion resistance

corrosion resistance is ensured through proper selection and measurement of the medium contact part of the diaphragm, the flange and the sealing gasket materials.

Material: OCR17NI12MO2(SUS316L), onel alloy, hartz alloy, ta,f4

Flange material: sus304, sus316, Lined with four fluorine.

## Diaphragm material

corrosion medium	Diaphragm material					
	Tin bronze (QSn6.5-0.4)	SUS316	tantalum (Ta)	monel (Ni70Cu30)	Hartz alloy (HC)	teflon(F4)
vitriol ( $\text{H}_2\text{SO}_4$ )	✓	△	○	✓	✓	✓
nitric acid ( $\text{HNO}_3$ )	×	✓	○	×	✓	✓
muriatic acid (HCL)	△	×	○	×	✓	✓
phosphoric acid ( $\text{H}_3\text{PO}_4$ )	✓	✓	○	✓	✓	✓
Acetic acid( $\text{CH}_3\text{COOH}$ )	✓	✓	○	✓	○	✓
Caustic soda (NaOH)	△	○	△	○	○	✓
Soda ash ( $\text{Na}_2\text{CO}_3$ )	○	○	○	○	✓	✓
Baking soda ( $\text{NaHCO}_3$ )	✓	○	○	○	○	✓
Chlorine( $\text{CL}_2$ )	dry: ✓wet: ×	dry: ✓wet: ×	○	dry: ✓wet: ×	✓	✓
Oil and gas( $\text{Br}_2$ )	dry: △wet: ×	dry: ×wet: △	○	dry: ○wet: ×	○	✓
Ammonia ( $\text{NH}_3$ )	×	✓	×	×	○	✓
Sea (30%NaCL)	✓	✓	○	○	○	✓
Instruction: ○-best    △-use with condition    ✓-ok    X-no use						





Demo mode

MT - 100 H / MF2 0~1MPa / Ta /

Model - Dia pressure range / unfold flange pressure range / accuracy /

HG/T20592-2009 DN25 PN1.6 / 304

Flange standard

/ Flange material

\* diaphragm-seal pressure gauge, bottom install, diaphragm material-Ta, pressure range 0~1MPa, flange standard-HG/20592-2009 DN25 PN1.6, flange material\_304.

Order remarks

Model

/ Shock-proof

/ DIA

/ Material

/ Installation



Isolator

/ Diaphragm material

/ Pressure range

/ Flange standard

/ Flange material



Safety Warning

To be safe, please choose the right type of product. Wrong choice of product or improper use will likely result in property damage or personal injury. The system designer and the user shall be fully responsible for choosing the right products and use the product in the correct way.



## Ultra High-Pressure Pressure Gauge



S.S Ultra High-Pressure Gauge  
Order Number:MT76323111



Ultra High-Pressure Gauge  
Order Number:MT76223111



S.S Ultra High-Pressure Gauge  
Order Number:MT76323111

### Application:

Ultra-high pressure gauge is suitable for measuring high pressure, large pressure fluctuation range or environmental vibration, such as hydraulic system and drilling equipment. Medium pulse load weighing, etc., can tolerance, impact pressure and sudden unloading, combined with the internal filling fluid damping can make its instruction stable and reliable; using stainless steel material can make general corrosion.

### Main parameters :

DIA:  
150mm

Accuracy grade:

1.6%、2.5%

Working pressure :  
Steady:  $3/4 \times$  full scale value  
Fluctuating:  $2/3 \times$  full scale value  
Short time: Full scale value

Protection grade :  
IP64 、 IP65

Pressure range :  
100 ~ 250MPa

Connection Thread :  
M20×1.5

Elastic element:  
stainless steel pipe

Connection material:

tin alloys, stainless steel  
Movement: copper alloy, SUS304

Casing :  
spray steel plate, SUS304

Glass:  
Common or safe glass



## Operation

- Pls carefully reading operation manual before using.
- The pressure gauge must be installed vertically and tightened by a wrench.
- Pressure gauges shall be horizontal or vertical installation.
- Measurement medium with explosion danger, easy to crystallization, easy solidified, corrosion resistance requirements, special medium measuring instrument should be used.

## Model Number Codes

Any special requirements pls confirm with technician.

MT



Ultra-high  
pressure  
gauge

N

-

1

2

Oil-filled

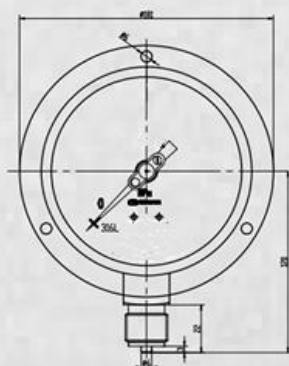
DIA

Φ 150mm

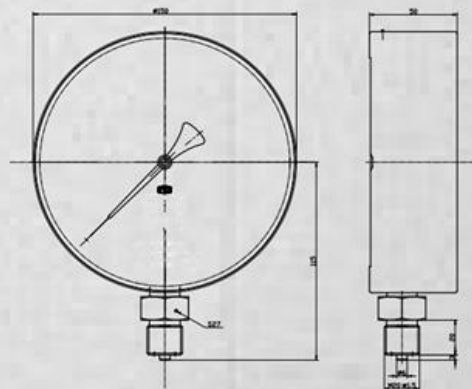
Installation

T:  
bottom with flange  
Blank:  
bottom without flange

## Shape Size



Seal type



common type



Demo mode

MTN - 150 0~160MPa / M20×1.5 / 1.6%

Model    -    Dia    pressure range    /    connection thread    /    accuracy

\* Ultra-high pressure gauge, dia=150 bottom install, pressure range0~160MPa, thread M20\*1.5, accuracy:1.6%

Order Remarks

Model

/

DIA

/

Installation

/

Pressure  
Range

/

Connection  
thread



Safety Warning

To be safe, please choose the right type of product. Wrong choice of product or improper use will likely result in property damage or personal injury. The system designer and the user shall be fully responsible for choosing the right products and use the product in the correct way.



## Capsule Pressure Gauge



Capsule Pressure Gauge  
Order Number:MT33110111



Capsule Pressure Gauge  
Order Number:MT33310711



Capsule Pressure Gauge  
Order Number:MT33110111

## Application :

Capsule pressure gauges use capsule to measure micro pressure sensor, measure the corrode the copper alloy, micro pressure and negative pressure of the gas without explosion danger, widely applied to boiler ventilating, gas pipeline, burning device and other similar devices. According to the guide system and the case, all stainless steel capsule pressure gauge adopts stainless steel material, used in corrosion resistance to demand higher on all kinds of gas medium in the process of micro pressure and negative pressure measurement.

## Theory :

It is made of measuring system (including joints, corrugated box, etc.), the transmission mechanism (including the pull rod mechanism, the gear transmission mechanism), indicating parts (including pointer and dial) and the shell (including casing, lining and table glass). The operation principle is based on the corrugated bellows under pressure measured medium, to produce the corresponding elastic deformation, then through and to amplify the transmission gear transmission mechanism, gradually by pointer fixed on gear shaft measured value on the dial indicator. And the instrument with zero device can easily adjust the zero.

## Main parameters :

DIA: 60mm、 75mm、 100mm、 150mm

Accuracy grade : 2.5%、 1.6%

Working pressure : The pressure gauge should not exceed 3/4 of the maximum scale value under steady pressure and not exceed 2/3 of the maximum scale value under fluctuation pressure and not exceed 1/3 of the maximum scale value under short-time pressure.

IP grade : IP65

Pressure range : 1 ~ 60KPa

Connection thread : M14×1.5、 M20×1.5、 PF(PT、 NPT)1/4  
PF(PT、 NPT)3/8、 PF(PT、 NPT)1/2  
Capsule elements : Tin phosphor bronze sheet by soldering;  
SUS316L sheet by laser welding.

Connector material: copper alloy (common type) SUS304 or SUS316 (Stainless steel)

Movement : copper alloy, SUS304

Case : steel 08f plastic spraying, SUS304

Glass : common, safe, PC

Character : outside zero setting design





## Operation Manual

- Carefully reading manual before using.
- With a sharp pressure changes or vibration environment, environment protection device shall be added.
- The pressure gauge must be installed vertically and tightened by a wrench.
- Pressure gauges shall be horizontal or vertical installation.
- Measurement with explosion danger, easy to crystallization, easy solidified, corrosion resistance requirements, special medium measuring instrument should be used.
- Working environment temperature-40℃~+70℃, Relative humidity no more than 85%.

## Model Number Codes

Any special requirements pls confirm with technician.

MTE

-

1

2

H



Capsule  
Pressure  
Gauge

DIA

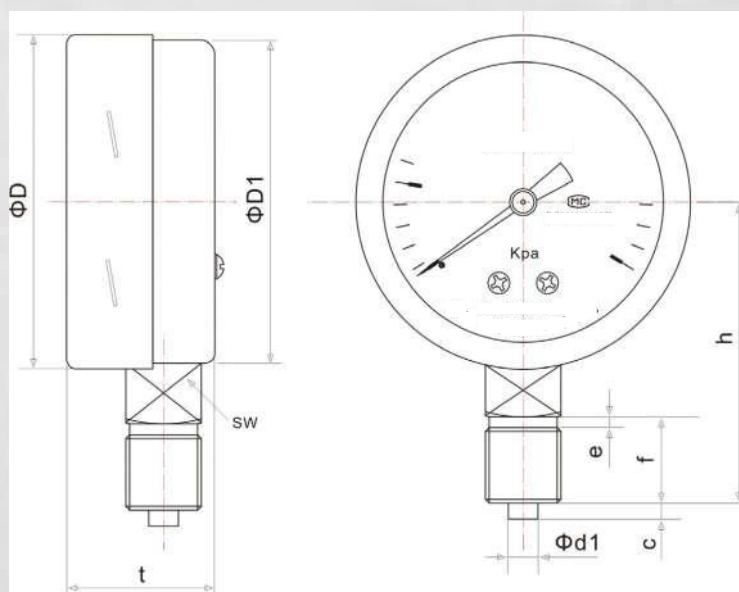
Installation

Full S.S.

Φ60mm  
Φ75mm  
Φ100mm  
Φ150mm

Blank:  
bottom without flange

## Shape Size





## Size table

unit: mm

Model	$\Phi D$	$\Phi D1$	t	h	f	e	c	$\Phi d1$	SW
MTE -60	67	65	40	57	14	2	2	4	14
MTE -75	79	78	48	67	17	2	2	5	17
MTE -100	101	99	50	87	20	2	3	6	22
MTE -150	150	147	50	112	20	2	3	6	22

## Demo mode

MTE - 100 0~10KPa / M20×1.5

Model - Dia pressure range / connection thread

\* Capsule pressure gauge, dia=100 bottom install, pressure range0~10kpa, thread M20\*1.5

## Order Remarks

Model

/

DIA

/

Installation

/

Pressure  
Range

/

Connection  
thread

## Safety Warning

To be safe, please choose the right type of product. Wrong choice of product or improper use will likely result in property damage or personal injury. The system designer and the user shall be fully responsible for choosing the right products and use the product in the correct way.



## Magnetic Induction Differential Pressure Gauge



Magnetic Induction Differential  
Pressure Gauge  
Order Number : MT863057111



Magnetic Induction Differential  
Pressure Gauge  
Order Number : MT863057111

### Application:

Magnetic induction differential pressure gauge is suitable for measuring the pressure of the fan and blower, filter resistance, wind speed, furnace pressure, orifice differential pressure, water level of bubble and liquid amplifier or hydraulic system pressure, etc, also used for the air in the process of combustion gas ratio test. It is our patent product.

### Theory:

Magnetic induction differential pressure gauge is made of measuring system (including joint, magnetic steel, etc.), transmission mechanism (magnetic steel components), indicating device (including a pointer and dial) and the shell (including casing, lining and table glass). The working principle, using the effect of different pressure, make a group of carbon steel ptfe line make produce displacement in the stainless steel body diameter, through the induction between different direction magnetic field lines, turns the points and the different value.

### Main parameters:

Dia:  
100mm, 150mm

Connection thread:  
PT1/4

Body:  
Using SUS316 whole processing production, resistance to high pressure

Unilateral maximum static pressure :  
200 bar

IP:  
IP65

Case:  
All stainless steel SUS304 mirror polishing

Window glass:  
safe glass



## Operation

- The pressure gauge must be installed vertically and tightened by a wrench.;
- Pressure gauges shall be horizontal or vertical installation;
- Differential pressure should be noticed;
- No magnetic field interference;
- ambient temperature between  $-40^{\circ}\text{C}\sim+70^{\circ}\text{C}$  with a relative humidity not exceeding 85%

## Model Number Codes

Any special requirements pls confirm with technician.

CTS



Magnetic  
induction  
differential  
pressure gauge

-

1

DIA

$\Phi 110\text{mm}$   
 $\Phi 150\text{mm}$

2

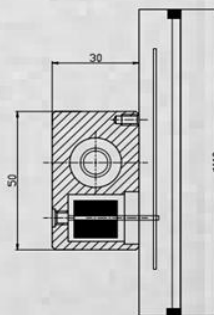
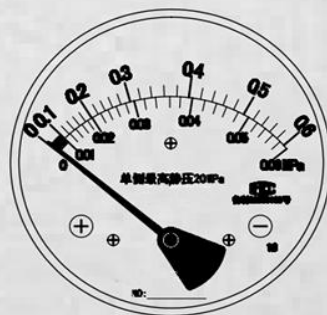
Installation

Blank: bottom

## Pressure range、Accuracy

Model	Pressure gauge ( $\Delta P$ ) bar	accuracy grade (%)	connection thread
CTS-110 CTS-150	0~ (0.2/0.3/0.5/1/1.6/2/2.5/4/6/7)	1.5	PT1/4 F

## Boundary dimension





Demo mode

CTS - 100 0~0.6bar / PT1/4

Model - Dia pressure range / connection thread

\* Magnetic induction differential pressure gauge, bottom install, pressure range 0~10kpa, thread PT1/4.

Order Remarks

Model

/

DIA

/

Installation

/

Pressure  
Range

/

Connection  
thread



Safety Warning

To be safe, please choose the right type of product. Wrong choice of product or improper use will likely result in property damage or personal injury. The system designer and the user shall be fully responsible for choosing the right products and use the product in the correct way.





## Explosion-Proof Electric Contact Pressure Gauge

### Application :

With explosion danger area, it is used to measure of crystals, solidification of explosive mixture of various explosive medium pressure. With the instrument with corresponding explosion-proof performance or take corresponding safety measures of electrical devices (such as relay and contactor, etc), it can realize the automatic control for the controlled system and transmitting (alarm). With measurement control function, it can arbitrarily set upper and lower control pressure value, the movement is stable and reliable; it is widely used on the mechanical and electrical equipment, in petroleum, chemical industry, power station, metallurgy, water supply and other industrial enterprises.



Explosion-Proof Electric Contact  
Pressure Gauge  
Order Number: MT4605111

### Theory :

It is made of the explosion-proof appearance, measuring system, electric contact group, the control device and the outlet box, etc.

Explosion-proof enclosure has the good explosion-proof performance, so in normal work process because of the influence of the sparks or electric arc, in addition to the hard for a shell under internal explosive gas mixtures at once an explosion of explosion pressure, and can effective organization of the resulting heat well spread outward, but only inside the shell along the flame-proof joint surface tiny cracks in slowly spread outward. At this time, the external moments to shell temperature has dropped below the ignition temperature of explosive gas mixture, it will not lead to explosive.

Working principle is based on detecting element (bourdon tube) in measuring system of elastic deformation, through mechanical transmission to drive the electric contact in a group to produce the corresponding action (closed or disconnected) to make the control circuit of pressure system satisfied on or off, so as to realize the purpose of automatic alarm and control instructions given.



Explosion-Proof Electric Contact  
Pressure Gauge  
Order Number: MT4605111

### Main parameters :

DIA: 160mm

Accuracy grade : 1.6%

Working pressure : The pressure gauge should not exceed 3/4 of the maximum scale value under steady pressure and not exceed 2/3 of the maximum scale value under fluctuation pressure.

Contact power: 30VA

Working Voltage : AC220V or AC380V

Working current : no more than 0.5A

Control method: top and bottom limitation, contact switch.

Connection Thread: M20×1.5, PF(PT, NPT)1/2

Bourdon tube : sus304 or sus316

Connection material: sus304 or sus316

Movement : sus304

Casing : aluminium alloy

Glass: stalinite, double pane safety glass



Explosion-Proof Electric Contact  
Pressure Gauge  
Order Number: MT4605111



## Operation

- The electrician person can operate;
- Debugging or switch control interval, control circuit should disconnects, after that, it is power on;
- Carefully reading manual before use;
- With a sharp pressure changes or vibration;
- environment. Pulse environment protection device shall be added;
- The pressure gauge must be installed vertically and tightened by a wrench;
- Measurement of oxygen, acetylene, or other combustible gas should be chosen with ban oil logo pressure gauge;
- Pressure gauges shall be horizontal or vertical installation;
- Measurement with explosion danger, easy to crystallization, easy solidified, corrosion resistance requirements, special medium measuring instrument should be used;
- used at an ambient temperature between  $-40^{\circ}\text{C}\sim+70^{\circ}\text{C}$  with a relative humidity not exceeding 85%.

## Model Number Codes

Any special requirements pls confirm with technician.

MT



Pressure Gauge

X

-

1

2

B

contact switch

DIA

Installation

Explosion structure

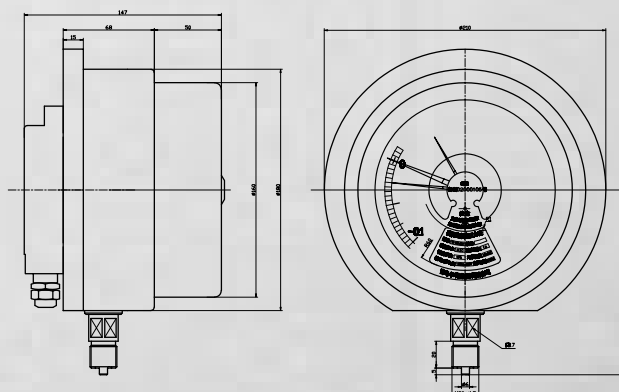
$\Phi 160\text{mm}$

Blank: bottom

## Pressure range, accuracy grade

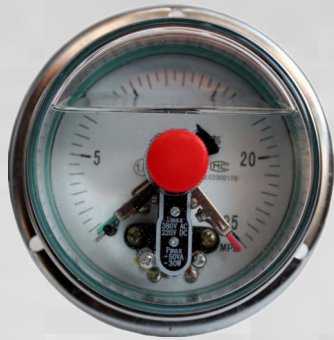
Product name	Model	Pressure range (MPa)	Accuracy grade (%)	Thread
Explosion proof electric contact pressure gauge	MTX-160B	0~ (0.1/0.16/0.25/0.4/0.6/1/1.6 /2.5/4/6/10/16/25/40/60) -0.1~ (0/0.15/0.3/0.5/0.9/1.5/2.4)	1.6	M20×1.5

## Boundary dimension





## Shock-Resistant Electric Contact Pressure Gauge



Shock-Resistant Electric Contact  
Pressure Gauge  
Order Number: MT45312731



Shock-Resistant Electric Contact  
Pressure Gauge  
Order Number: MT45205131



Shock-Resistant Electric Contact  
Pressure Gauge  
Order Number: MT45305131

### Application:

Shock-proof electric contact pressure gauge has excellent performance of pulsating resistance and impact resistance, resistance to vibration, widely used in petroleum, chemical, chemical fiber, metallurgy, power stations and other industrial departments of fluctuating pressure, seismic requirements higher industrial process, measuring the pressure of all kinds of fluid medium, in addition the meter with electric contact device, used for on-site instruction and contact switch circuit in the pressure regulation system, and can automatic control and remote transmission, namely when the pressure to the expected value can connect or disconnect the control circuit, the purpose of automatic alarm. And instrument itself seismic structure can effectively inhibit pointer jitter, impact, protect the contact, and make the instrument instructions clear, electrical switch, reliable and stable work.

### Features:

1. Contact device is magnetic type gold plated contact point contact, with contact reliable, corrosion resistance
2. Another dry reed contacts can be in low voltage (24V, 12V) condition good transmission signal, no fly fox phenomenon, fast response speed, long service life, its characteristic is to contact switch cut off from the atmosphere, have rare gas or vacuum tube, can reduce the contact change and carbonization, and due to seal, can prevent external organic steam and dust magazine junctions, erosion, dry reed contact fills pressure gauge electricity contact on the low voltage range of application of blank, satisfy the intellectualization.

### Main parameters:

DIA: 100mm、 150mm

Accuracy grade :1.6%

Working pressure :The pressure gauge should not exceed 3/4 of the maximum scale

value under steady pressure and not exceed 2/3 of the maximum scale value under fluctuation pressure

Max power :50VA

Working Voltage:

DC24V, AC220V or AC380V

Control method: top and bottom limitation、 contact switch, dry reed

IP grade: IP65

Connection Thread: M20×15、 PF(PT、 NPT)1/2

Damping fluid : Silicon oil

Bourdon tube : brass, sus304 or sus316

Connection material: tin alloys, sus304 or sus316

Movement :SUS304, copper alloy

Casing:SUS304, Steel plate chrome plated

Glass: PC



## Operation

- The electrician person can operate.
- Debugging or switch control interval, control circuit should disconnects, after that, it is power on.
- Dry reed electric contact pressure gauge must be used in low voltage control environment, within the scope of the technical parameters specified use, otherwise it will cause damage of contact.
- Carefully reading manual before use.
- With a sharp pressure changes or vibration environment. Pulse environment protection device shall be added.
- The pressure gauge must be installed vertically and tightened by a wrench.
- Measurement of oxygen, acetylene, hydrogen, or other combustible gas should be chosen with ban oil logo pressure gauge.
- Pressure gauges shall be horizontal or vertical installation.
- Measurement with explosion danger, easy to crystallization, easy solidified, corrosion resistance requirements, special medium measuring instrument should be used.
- The pressure gauge is to be used at an ambient temperature between  $-40^{\circ}\text{C}$ ~ $+70^{\circ}\text{C}$  with a relative humidity not exceeding 85%.

## Model Number Codes

Any special requirements pls confirm with technician.

M	TN	X	-	1	2	C/G
	Shock proof oil filled	Contact switch		DIA	Installation	Magnetic or Dry
Pressure Gauge				$\Phi 100\text{mm}$ $\Phi 150\text{mm}$	blank: bottom z: back ZT: back with flange	

## Pressure range、Accuracy

Product name	Model	Pressure Range (MPa)	Accuracy Grade (%)	Connection Thread
Shock proof electric contact pressure gauge	MTNX-100C(Z/ZT) MTNX-150C(Z/ZT)	$0 \sim (0.1/0.16/0.25/0.4/0.6/1/1.6/2.5/4/6/10/16/25/40/60)$ $-0.1 \sim (0/0.15/0.3/0.5/0.9/1.5/2.4)$	1.6	M20×1.5



## Size lists

unit: mm

Model	ΦD	b	h	ΦD2	D0	d1	L	d	d2	SW
MTNX -100C	112	95	87	-	-	-	20	M20×1.5	Φ6	17
MTNX -100CZT	112	95	30	132	Φ118	Φ6	20	M20×1.5	Φ6	17
MTNX -150C	160	95	110	-	-	-	20	M20×1.5	Φ6	17
MTNX -150CZT	160	95	30	182	Φ165	Φ6	20	M20×1.5	Φ6	17

## Demo mode

MTNX - 100 C/H 0~1MPa / M20×1.5

Model - DIA Magnetic / Stainless Pressure range / connection thread

\* Shock proof electric contact pressure gauge, 100 bottom install, pressure range 0~1Mpa, thread M20\*1.5, if medium, installation.etc were provided, model will be chosen quickly.

## Order Remarks

Model

/

DIA

/

Installation

/

Pressure Range

/

Connection thread



## Safety Warning

To be safe, please choose the right type of product. Wrong choice of product or improper use will likely result in property damage or personal injury. The system designer and the user shall be fully responsible for choosing the right products and use the product in the correct way.

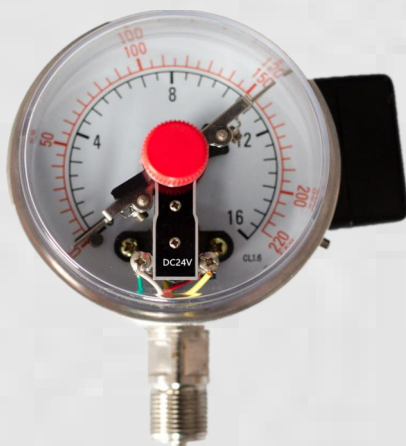




## Reed Switch Electric Contact Pressure Gauge



Reed Switch Electric Contact  
Pressure Gauge  
Order Number:MT45213111



Reed Switch Electric Contact  
Pressure Gauge  
Order Number:MT45311111

### Application:

this instrument is used in measuring non-corrosive non-crystalline liquid and the pressure of the gas explosion hazard.

The meter must be with the corresponding electrical control components(such as relay and contactor,PLC,etc., the pressure to be measured can achieve system implementation preset maximum or minimum pressure value of the two position automatic control and output signal (alarm). Instrument measurement control function, can be arbitrary set upper and lower control pressure value,the movement is stable and reliable,widely used in petroleum,chemical industry,power station,metallurgy, water supply and other industrial enterprises and the mechanical and electrical equipment.

### Features:

Dry reed contacts can be in low voltage(24 v,12 v) condition good transmission signal, no fly fox phenomenon,fast response speed, long service life, its characteristic is to contact switch cut off from the atmosphere, have rare gas or vacuum tube,can reduce the contact change and carbonization,and due to seal,can prevent external organic steam and dust magazine junctions,erosion,dry reed contact fills pressure gauge electricity contact on the low voltage range of application of blank,satisfy the intellectualization.

### Main parameters:

DIA: 100mm、 150mm

Accuracy grade :1.6%

Working pressure :

The pressure gauge should not exceed 3/4 of the maximum scale value under steady pressure and not exceed 2/3 of the maximum scale value under fluctuation pressure.

Max power :10W

Working voltage :DC24V

Working current :no more than 0.5A

Working life :one million times

Control method :top and bottom limitation

Connection Thread: M20×1.5、 PF(PT、 NPT)1/2

Bourdon tube: brass, sus304 or sus316

Connection material: tin alloys,sus304 or sus316

Movement : SUS304, copper alloy

Casing:SUS304, spray steel plate

Glass:PC



## Operation

- The electrician person can operate.
- Debugging or switch control interval, control circuit should disconnects, after that, it is power on.
- Dry reed electric contact pressure gauge must be used in low voltage control environment, within the scope of the technical parameters specified use, otherwise it will cause damage of contact.
- Carefully reading manual before use.
- With a sharp pressure changes or vibration environment. Pulse environment protection device shall be added.
- The pressure gauge must be installed vertically and tightened by a wrench.
- Measurement of oxygen, acetylene, hydrogen, or other combustible gas should be chosen with ban oil logo pressure gauge.
- Pressure gauges shall be horizontal or vertical installation.
- Measurement with explosion danger, easy to crystallization, easy solidified, corrosion resistance requirements, special medium measuring instrument should be used.
- The pressure gauge is to be used at an ambient temperature between  $-40^{\circ}\text{C}$ ~ $+70^{\circ}\text{C}$  with a relative humidity not exceeding 85%.

## Model Number Codes

Any special requirements pls confirm with technician.

MT



Pressure Gauge

X

-

1

2

G

Contact switch

DIA

Installation

dry reed

$\Phi 100\text{mm}$   
 $\Phi 150\text{mm}$

blank: bottom  
z: back,  
T: bottom with flange,  
ZT: back with flange

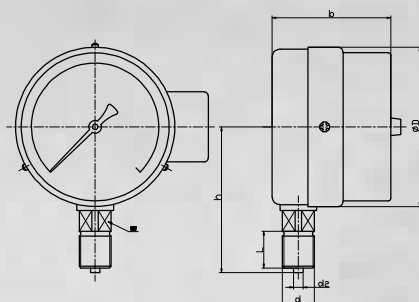
## Pressure range、Accuracy

Product name	Model	Pressure range (MPa)	Accuracy grade (%)	Connection thread
Dry reed electric contact pressure gauge	MTX100G(T/Z/ZT)	0~ (0.1/0.16/0.25/0.4/0.6/1/1.6	1.6	M20×1.5
	MTX150G(T/Z/ZT)	/2.5/4/6/10/16/25/40/60) -0.1~ (0/0.15/0.3/0.5/0.9/1.5/2.4)		

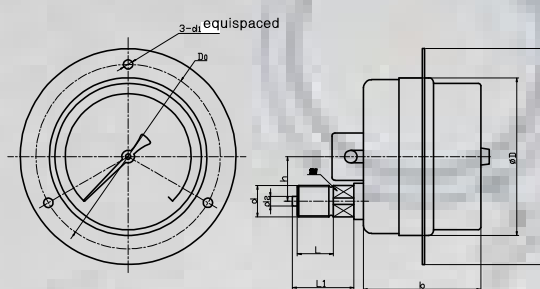
To adapt to the measured object and different demand, this series of instrument on the basis of the original regular and special, and successively developed the earthquake, all steel, all steel vibration-proof type, dry reed, and various types of products such as with isolation device (containing ammonia, oxygen, heat resistance, shock resistance and other different series).



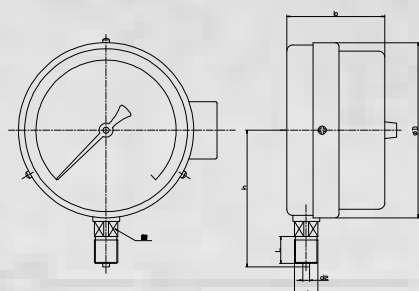
## Boundary dimension



Bottom

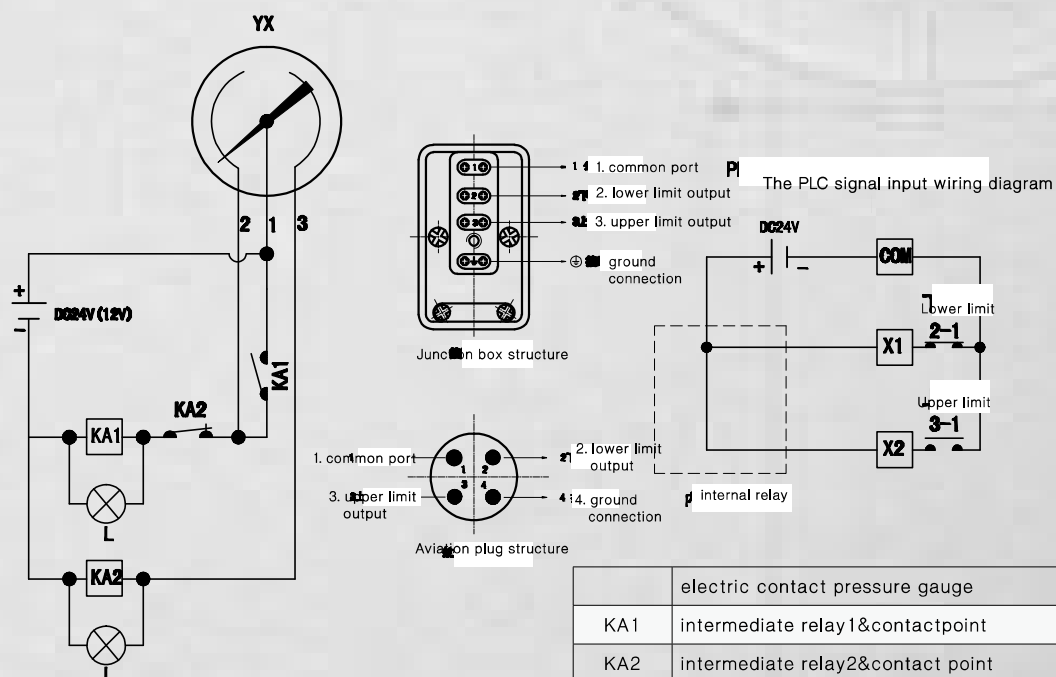


back



Bottom(magnetic)

## Schematic diagram



	electric contact pressure gauge
KA1	intermediate relay1&contactpoint
KA2	intermediate relay2&contact point
L	indicator light
COM	With negative connection public power supply
X1	The lower limit switch signal input point
X2	The upper limit switch signal input point



## Size lists

unit: mm

Model	ΦD	b	h	ΦD2	D0	d1	L	d	d2	SW
MTX -100(G)	100	76	87	-	-	-	20	M20×1.5	Φ6	17
MTX-100ZT(G)	100	76	30	132	Φ118	Φ6	20	M20×1.5	Φ6	17
MTX -150G	150	82	110	-	-	-	20	M20×1.5	Φ6	17
MTX-150ZT(G)	150	69/82	30	182	Φ165	Φ6	20	M20×1.5	Φ6	17

## Demo mode

MTX - 100 G 0~1MPa / M20×1.5

Model	-	DIA	Dry reed	Pressure range	/	connection thread
* Dry reed electric contact pressure gauge, 100 bottom install, pressure range0~1Mpa, thread M20*1.5, if medium, installation.etc were provided, model will be chosen quickly.						

## Order Remarks

Model	/	DIA	/	Installation	/	Pressure Range	/	Connection thread
<input checked="" type="checkbox"/>		<input checked="" type="checkbox"/>		<input checked="" type="checkbox"/>		<input checked="" type="checkbox"/>		<input checked="" type="checkbox"/>

## Safety Warning

To be safe, please choose the right type of product. Wrong choice of product or improper use will likely result in property damage or personal injury. The system designer and the user shall be fully responsible for choosing the right products and use the product in the correct way.



## Photoelectric Induction Electric Contact Pressure Gauge



Photoelectric Induction Electric Contact  
Pressure Gauge  
Order Number:MT46105111

### Application :

Photoelectric sensing electric contact pressure gauges used non-contact electric contact, the application of the photoelectric sensor, high sensitivity, corresponding quickly, high control accuracy, no lag jumping phenomenon, long service life, good switch characteristics, can be used in petroleum, chemical industry, power plants, heating system, environmental protection industries which does not corrode the copper alloy liquid, gas or steam pressure measurement, control and alarm system, the instrument with a corresponding electrical (relay or contactor), the preset pressure system to be measured can achieve the maximum or minimum pressure value of the two position automatic remote control and output signal (alarm).

### Main parameters :

DIA: 150mm

Accuracy grade: 1.6%

Working pressure:

Steady:  $3/4$  x full scale value

Fluctuating:  $2/3$  x full scale value Short time: Full scale value

Load power :250VA

Working Voltage: Av220V, DC24V

Control method :top and bottom limitation, contact switch

Connection Thread :M20×1.5、PF(PT、NPT)1/2

Bourdon tube : QSN tube

Connection material : tin alloys HPb59-1

Movement: copper alloy

Casing : spray steel plate

Glass: PC



## Operation

- The electrician person can operate.
- Debugging or switch control interval, control circuit should disconnects, after that, it is power on.
- Carefully reading manual before use.
- With a sharp pressure changes or vibration environment. Pulse environment protection device shall be added.
- The pressure gauge must be installed vertically and tightened by a wrench.
- Measurement of oxygen, acetylene, hydrogen, or other combustible gas should be chosen with ban oil logo pressure gauge.
- Pressure gauges shall be horizontal or vertical installation.
- Measurement with explosion danger, easy to crystallization, easy solidified, corrosion resistance requirements, special medium measuring instrument should be used.
- The pressure gauge is to be used at an ambient temperature between  $-40^{\circ}\text{C}$ ~ $+70^{\circ}\text{C}$  with a relative humidity not exceeding 85%.

## Model Number Codes

Any special requirements pls confirm with technician.

MT



Pressure Gauge

X

Contact switch

G

photoelectric sensor

-

1

DIA

$\Phi$  150mm

2

Installation

blank:  
bottom

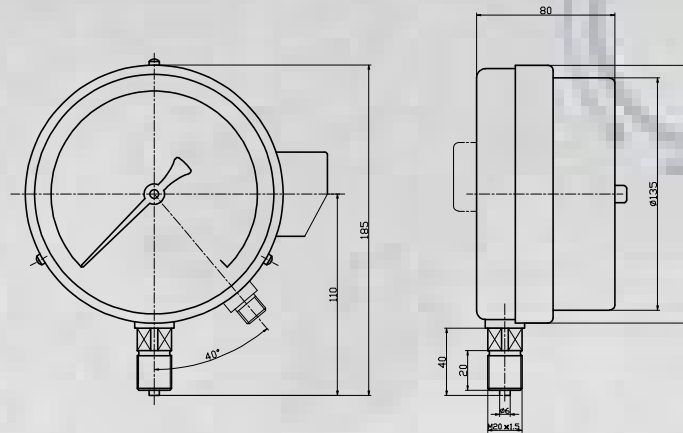
## Pressure range、accuracy grade

Product name	Model	Pressure range (MPa)	Accuracy grade (%)	Connection thread
Photoelectric sensor electric contact pressure gauge	MTXG-150	0~ (0.16/0.25/0.4/0.6/1/1.6/2.5/4/6/10/16/25/40/60) -0.1~ (0.15/0.3/0.5/0.9/1.5/2.4)	1.6	M20×1.5



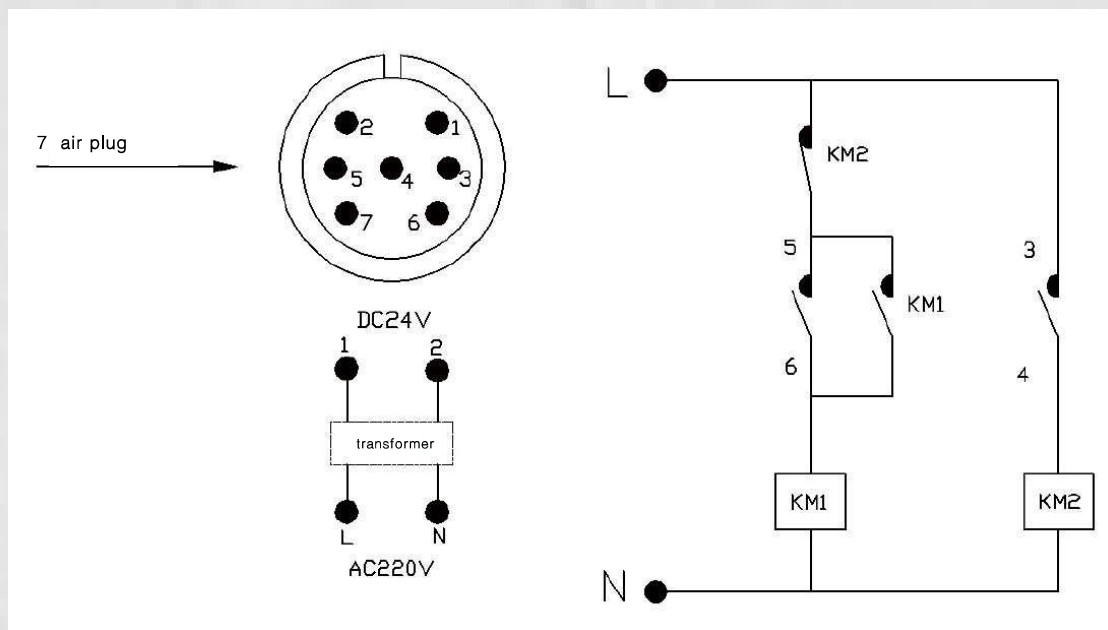


## Boundary dimension



bottom

## Schematic diagram



1. aviation plug point 1、2 contact power (Transformer secondary coil output)for pressure gauge
2. aviation plug point 3、4 upper limit control contact, point 5、6 lower limit control contact
3. KM1 KM2 -Ac contactor coil
4. L、N -External power supply
5. Actual pressure lower than limit, point 5&6 breakover, the contactor KM1 levels self-locking, external electrical equipment or devices to work at this time
6. Actual pressure upper than limit,point 3&4 breakover, the contactor KM2 off, and then make KM2 auxiliary normally closed off contact, KM1 coil disconnection, external electrical equipment to stop working, so as to achieve lower limit working, the upper limit stop control purposes



Demo mode

MTXG - 150 0~1MPa / M20×1.5

Model	-	Dia	pressure range	/	connection thread
* photoelectric sensor electric contact pressure gauge, 150 bottom install, pressure range 0~1Mpa, thread M20*1.5, if medium, installation.etc were provided, model will be chosen quickly.					

Order Remarks

Model	/	DIA	/	Installation	/	Pressure Range	/	Connection thread
<input checked="" type="checkbox"/>		<input checked="" type="checkbox"/>		<input checked="" type="checkbox"/>		<input checked="" type="checkbox"/>		<input checked="" type="checkbox"/>

Safety Warning

To be safe, please choose the right type of product. Wrong choice of product or improper use will likely result in property damage or personal injury. The system designer and the user shall be fully responsible for choosing the right products and use the product in the correct way.



## Electronic High-Output Electric Contact Pressure Gauge



Electronic High-Output Electric Contact  
Pressure Gauge  
Order Number:MT96206111



Electronic High-Output Electric Contact  
Pressure Gauge  
Order Number:MT96206111



Electronic High-Output Electric Contact  
Pressure Gauge  
Order Number:MT96206111

### Application :

Through internal integrated amplifier circuit transformation, electronic high-power electric contact pressure gauge has big output power, control current up to 10.A,can directly control AC36-380-velectrical signals,contact no spark, long life and other characteristics; Instrument with corresponding electric parts (relay or contactor),can be used in petroleum,chemical, power plants,such as rubber, heating, environmental protection industry in corrode the copper alloy liquid,gas,or steam pressure measurement,control and alarm system,also can be used in the above industries in the pipeline pressure control of the remote distance

### Main parameters :

DIA: 150mm

Accuracy grade:1.6%

Working pressure :Steady: $3/4 \times$ full scale value  
Fluctuating: $2/3 \times$ full scale  
value Short time: Full scale value

Contact power: 10VA

Working Voltage : AC220V、 AC380V

Control method : top and bottom limitation,  
contact switch

Connection Thread:M20 $\times$ 1.5、 PF(PT、 NPT)1/2

Bourdon tube:tin-phosphor bronze tube,  
SUS304,SUS316

Connection material: :tin alloys,SUS304,SUS316

Movement:copper alloy,SUS304

Casing:spray steel plate,SUS304

Glass:PC



## Operation

- The electrician person can operate.
- Debugging or switch control interval, control circuit should disconnects, after that, it is power on.
- Carefully reading manual before use.
- With a sharp pressure changes or vibration environment. Pulse environment protection device shall be added.
- The pressure gauge must be installed vertically and tightened by a wrench.
- Measurement of oxygen, acetylene, hydrogen, or other combustible gas should be chosen with ban oil logo pressure gauge.
- Pressure gauges shall be horizontal or vertical installation.
- Measurement with explosion danger, easy to crystallization, easy solidified, corrosion resistance requirements, special medium measuring instrument should be used.
- The pressure gauge is to be used at an ambient temperature between  $-40^{\circ}\text{C}$ ~ $+70^{\circ}\text{C}$  with a relative humidity not exceeding 85%.

## Model Number Codes

Any special requirements pls confirm with technician.

MT



Pressure Gauge

X

-

1

2

E

Contact switch

DIA

Installation

Electronic big power

$\Phi 150\text{mm}$

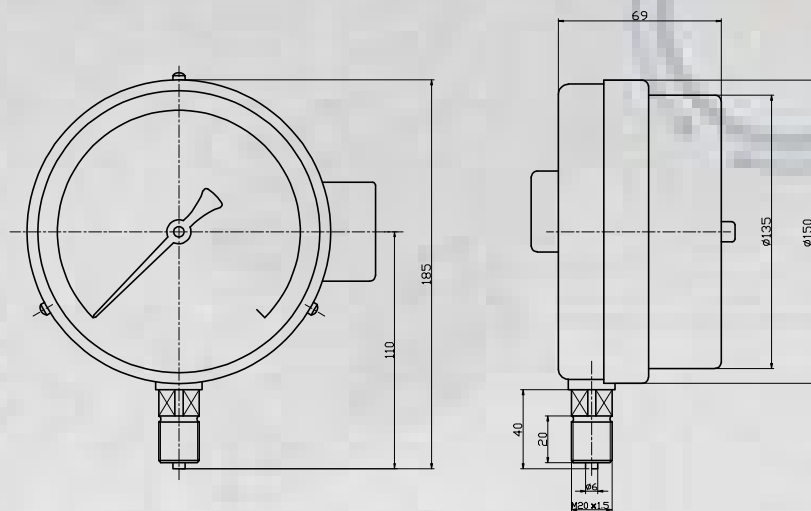
blank: bottom  
Z: back  
T: bottom with front flange  
ZT: back with front flange

## Pressure range、accuracy grade

Product name	Model	Pressure range (MPa)	Accuracy grade (%)	Connection thread
Electronic high-power electric contact pressure gauge	MTX-150E(T/Z/ZT)	0~ (0.16/0.25/0.4/0.6/1/1.6/2.5/4/6/10/16/25/40/60) -0.1~ (0.15/0.3/0.5/0.9/1.5/2.4)	1.6	M20×1.5

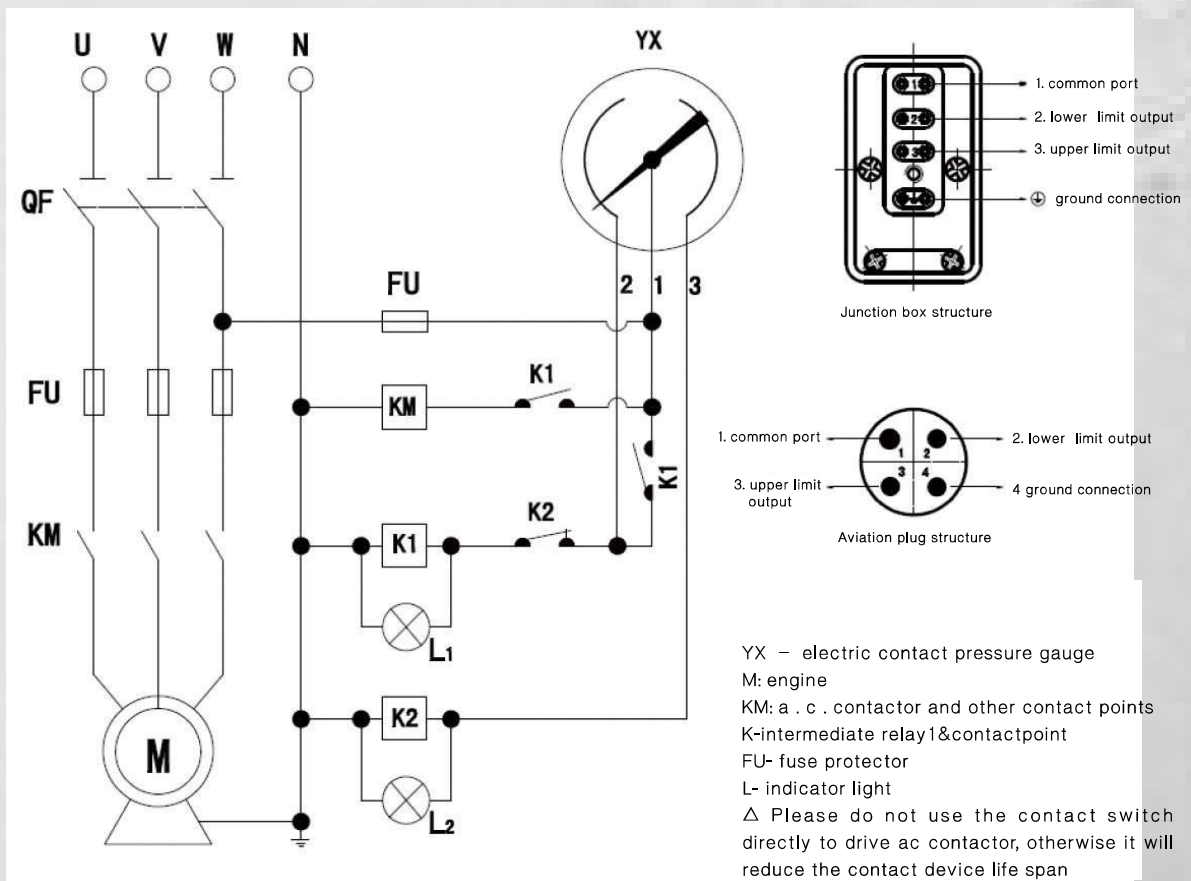


## Boundary dimension



bottom

## Wiring diagram





Demo mode

MTX - 150 E 0~1MPa / M20×1.5

Model - Dia big power pressure range / connection thread

\* Electronic high-power electric contact pressure gauge, 150 bottom install, pressure range 0~1Mpa, thread M20\*1.5, if medium, installation.etc were provided, model will be chosen quickly.

Order Remarks

Model

/

DIA

/

Installation

/

Pressure  
Range

/

Connection  
thread



Safety Warning

To be safe, please choose the right type of product. Wrong choice of product or improper use will likely result in property damage or personal injury. The system designer and the user shall be fully responsible for choosing the right products and use the product in the correct way.





## Electric Contact Pressure Gauge

### Application :



Electric Contact Pressure Gauge  
Order Number:MT43105112



Electric Contact Pressure Gauge  
Order Number:MT43105112



Electric Contact Pressure Gauge  
Order Number:MT43105112

this instrument is used in measuring non-corrosive non-crystalline liquid and the pressure of the gas explosion hazard. The meter must be with the corresponding electrical control components (such as relay and contactor, PLC, etc.), the pressure to be measured can achieve system implementation preset maximum or minimum pressure value of the two position automatic control and output signal (alarm).

Instrument measurement control function, can be arbitrary set upper and lower control pressure value, the movement is stable and reliable, widely used in petroleum, chemical industry, power station, metallurgy, water supply and other industrial enterprises and the mechanical and electrical equipment.

### Theory :

Instrument is made of measuring system, indicating device, magnetic (ordinary) electric contact device, shell adjusting device, and junction box, etc.

When the measured pressure acts on spring tube, its the end of the corresponding elastic deformation displacement, the transmission mechanism enlarge by indicating device on the dial indicator.

Contact Pointers to drive the electric contact device at the same time and set the pointer on the contactor (upper or lower limit) of contact, the on or off circuit control system, to achieve the goal of automatic control and transmitting alarm. Magnetic helps needle point earthing device of electric contact signal, the permanent magnet steel is equipped with adjustable. can increase the contact force and speed up the contact action, so that the contact point contact and reliable, eliminate arc, can effectively avoid the instrument caused by environmental vibration or medium pressure pulsation work contact frequently encounter off, so that the instrument has reliable operation, long service life, bigger contact switch power, etc.

### Main parameters :

DIA: 60mm 100mm 150mm

Accuracy grade : 2.5%、1.6%

Working pressure :

Steady: 3/4 x full scale value Fluctuating:

2/3 x full scale value Short time: Full scale value

Contact power : 10VA、30VA、50VA

Working Voltage: DC24V、AC110V、AC220V、AC380V

Control method : top and bottom limitation, double limitation, double limitation slow contact way, contact switch, orpiment, photoelectric sense, magnetic and mechanics

Connection Thread :

M14×1.5、M20×1.5、PF(PT、NPT)1/2

Bourdon tube:

tin-phosphor bronze tube, SUS304, SUS316

Connection material :

tin alloys, SUS304, SUS316

Movement :

copper alloy, SUS304

Casing: spray steel plate, SUS304

Glass: PC




## Operation

- The electrician person can operate.
- Debugging or switch control interval, control circuit should disconnects, after that, it is power on.
- Carefully reading manual before use.
- With a sharp pressure changes or vibration environment. Pulse environment protection device shall be added.
- The pressure gauge must be installed vertically and tightened by a wrench.
- Measurement of oxygen, acetylene, hydrogen, or other combustible gas should be chosen with ban oil logo pressure gauge.
- Pressure gauges shall be horizontal or vertical installation.
- Measurement with explosion danger, easy to crystallization, easy solidified, corrosion resistance requirements, special medium measuring instrument should be used.
- The pressure gauge is to be used at an ambient temperature between  $-40^{\circ}\text{C} \sim +70^{\circ}\text{C}$  with a relative humidity not exceeding 85%.

## Model Number Codes

Any special requirements pls confirm with technician.

MT	X	-	1	2	C
	Pressure Gauge	Contact switch	DIA $\Phi 60\text{mm}$ $\Phi 100\text{mm}$ $\Phi 150\text{mm}$	Installation blank: bottom Z: back T: bottom with front flange ZT: back with front flange	Magnetic acting

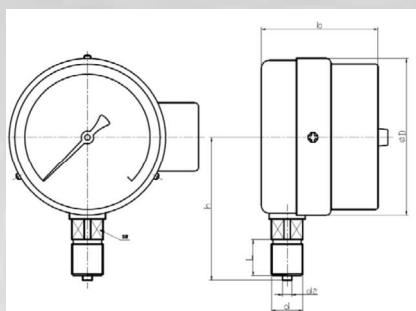
## Pressure range、accuracy grade

Product name	model	pressure range (MPa)	accuracy grade (%)	connection thread
electric contact pressure gauge	MTX -60(Z/ZT)	0~ (0.16/0.25/0.4/0.6/1/1.6/2.5/4/6)	2.5	M14×1.5
electric contact pressure gauge	MTX100(T/Z/ZT) MTX150(T/Z/ZT)	0~ (0.1/0.16/0.25/0.4/0.6/1/1.6/2.5/4/6/10/16/25/40/60/100) -0.1~ (0/0.15/0.3/0.5/0.9/1.5/2.4)	1.6	M20×1.5
Magnetic electric contact pressure gauge	MTX -60C(Z/ZT)	0~ (0.16/0.25/0.4/0.6/1/1.6/2.5/4/6)	2.5	M14×1.5
Magnetic electric contact pressure gauge	MTX100C(T/Z/ZT) MTX150C(T/Z/ZT)	0~ (0.1/0.16/0.25/0.4/0.6/1/1.6/2.5/4/6/10/16/25/40/60/100) -0.1~ (0/0.15/0.3/0.5/0.9/1.5/2.4)	1.6	M20×1.5
O <sub>2</sub> electric contact pressure gauge	MTX -100 MTX -150	0~ (1/1.6/2.5/4/25)	1.6	M20×1.5
Ammonia electric contact pressure gauge	MTX -100 MTX -150	0~ (0.16/0.25/0.4/0.6/1/1.6/2.5/4/6/10/16/25) -0.1~ (0.15/0.3/0.5/0.9/1.5/2.4)	1.6	M20×1.5

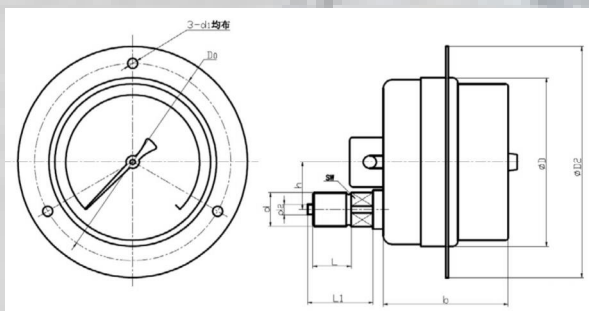
To adapt to the measured object and different demand, this series of instrument on the basis of the original regular and special, and successively developed seismic, all steel, full steel resistant, dry reed, and various types of products such as with isolation device (containing ammonia, oxygen, heat resistance, shock resistance and other different series)



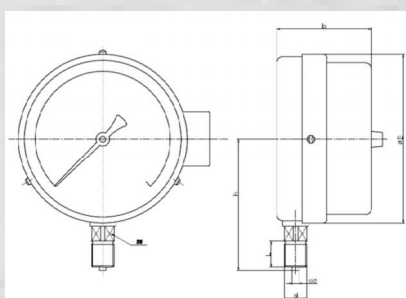
## Boundary dimension



Bottom

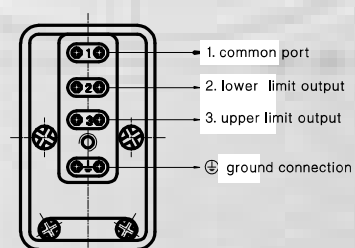
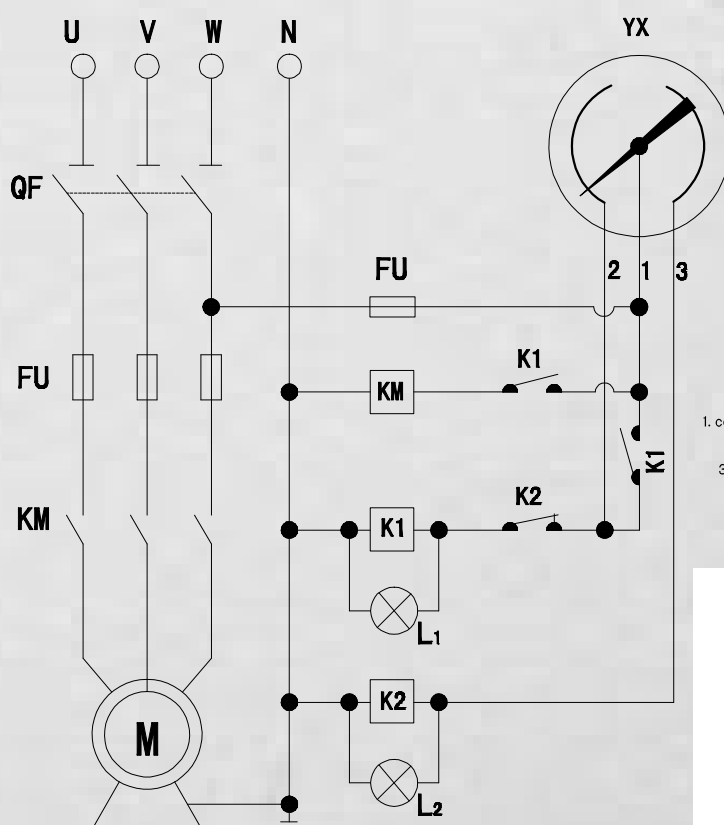


back

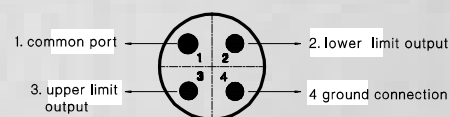


Bottom magnetic

## Wiring diagram



Junction box structure



Aviation plug structure

YX - electric contact pressure gauge

M: engine

KM: a . c . contactor and other contact points

K-intermediate relay1&amp;contactpoint

FU- fuse protector

L- indicator light

△ Please do not use the contact switch directly to drive ac contactor, otherwise it will reduce the contact device life span



## Size lists

单位: mm

Model	ΦD	b	h	ΦD2	D0	d1	L	d	d2	SW
-100(C)	100	76	87	-	-	-	20	M20×1.5	Φ6	17
-100ZT(C)	100	76	30	132	Φ118	Φ6	20	M20×1.5	Φ6	17
-150	150	69	110	-	-	-	20	M20×1.5	Φ6	17
-150C	150	82	110	-	-	-	20	M20×1.5	Φ6	17
-150ZT(C)	150	69/82	30	182	Φ165	Φ6	20	M20×1.5	Φ6	17

## Demo mode

MTX - 100 0~1MPa / M20×1.5

Model	-	Dia	pressure range	/	connection thread
* Electric contact pressure gauge, 150 bottom install, pressure range 0~1Mpa, thread M20*1.5, if medium, installation.etc were provided, model will be chosen quickly.					

## Order Remarks

Model	/	DIA	/	Installation	/	Pressure Range	/	Connection thread
<input checked="" type="checkbox"/>		<input checked="" type="checkbox"/>		<input checked="" type="checkbox"/>		<input checked="" type="checkbox"/>		<input checked="" type="checkbox"/>

## Safety Warning

To be safe, please choose the right type of product. Wrong choice of product or improper use will likely result in property damage or personal injury. The system designer and the user shall be fully responsible for choosing the right products and use the product in the correct way.



## Potentiometer-Type Teletransmission Pressure Gauge

### Application :

Resistance teletransmission pressure gauge is suitable for the measurement of not corroding the copper alloy or stainless steel liquid, steam and gas pressure of the medium. Because inside the instrument set a sliding resistance transmitter, it can take measurements to transmit the power value to stay away from the measurement point of secondary instrument, in order to realize the concentrated check and remote control. In addition, the meter and on-site indicated pressure, in order to facilitate the process check.



Potentiometer-Type Teletransmission  
Pressure Gauge  
Order Number: MT105205111

### Structure principle :

This instrument consists of a bourdon tube pressure gauge and a measured pressure or a certain functional relation with sliding resistance transmitter, etc. The mechanical parts of the instrument at the same action principle and general bourdon tube pressure gauges. The resistance transmitter is set on the gear transmission mechanism. So when the gear drives mechanism of sector gear deflection of the shaft resistance transmitter derrick ((brush) to deflection. Because the brush on the resistor, makes the change of the measured pressure value transformation for the change of the resistance, and spread to the secondary instrument, indicating a corresponding reading values. At the same time, an instrument also indicates the pressure value accordingly.



Potentiometer-Type Teletransmission  
Pressure Gauge  
Order Number: MT105205111

With appropriate secondary instrument or instrument with frequency converter, can realize the automatic control for the controlled system and transmitting (alarm). Widely used in the constant pressure water supply project, etc.



Potentiometer-Type Teletransmission  
Pressure Gauge  
Order Number: MT105205111

### Main parameters :

DIA: 100mm、150mm

Accuracy grade: 1.6%

Working Pressure : Steady: 3/4x full scale value  
Fluctuating;

2/3 x full scale value

Short time: Full scale value

Initial resistance : 3 ~ 20

Full resistance : 310 ~ 400

Working voltage : no more than DC6V

IP 65 ((with oil))

Connection Thread : M20×1.5、PF(PT、NPT)1/2

Bourdon tube: tin-phosphor bronze tube, SUS304, SUS316

Connection material: tin alloys, SUS304, SUS316

Movement : copper alloy, SUS304

Casing: spray steel plate, SUS304

Glass: common, tempered glass





## Operation

- The electrician person can operate.
- Debugging or switch control interval, control circuit should disconnects, after that, it is power on.
- Carefully reading manual before use.
- With a sharp pressure changes or vibration environment. Pulse environment protection device shall be added.
- The pressure gauge must be installed vertically and tightened by a wrench.
- Pressure gauges shall be horizontal or vertical installation.
- Measurement with explosion danger, easy to crystallization, easy solidified, corrosion resistance requirements, special medium measuring instrument should be used.
- Used at an ambient temperature between  $-40^{\circ}\text{C} \sim +70^{\circ}\text{C}$  with a relative humidity not exceeding 85%.

## Model Number Codes

Any special requirements pls confirm with technician.

MT

TZ

-

1

2

H

Pressure  
GaugeResistance  
teletransmission

DIA

Installation

Stainless steel

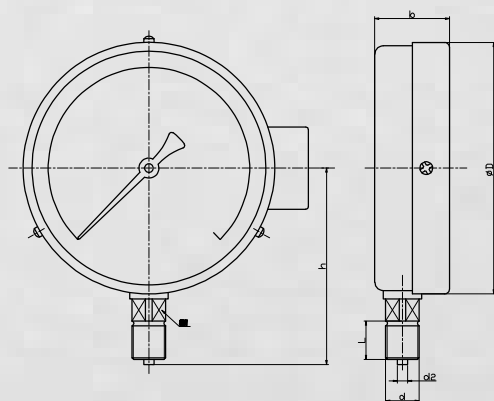
 $\Phi 100\text{mm}$   
 $\Phi 150\text{mm}$ 

blank: bottom

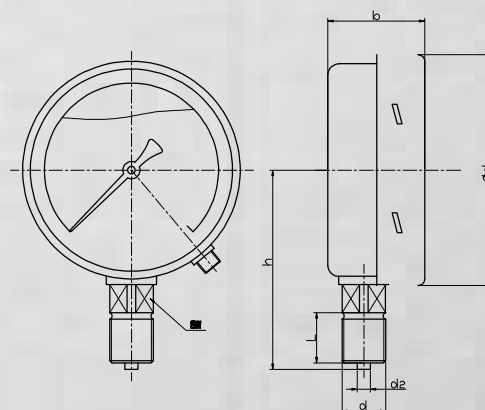
## Pressure range、 accuracy grade

Product name	model	pressure range (MPa)	accuracy grade (%)	connection thread
Resistance teletransmission pressure gauge	MTTZ -100(H) MTTZ -150(H)	0~ (0.1/0.16/0.25/0.4/0.6/1/1.6/ 2.5/4/6/10/16/25) -0.1~0	1.6	M20×1.5

## Boundary dimension



common

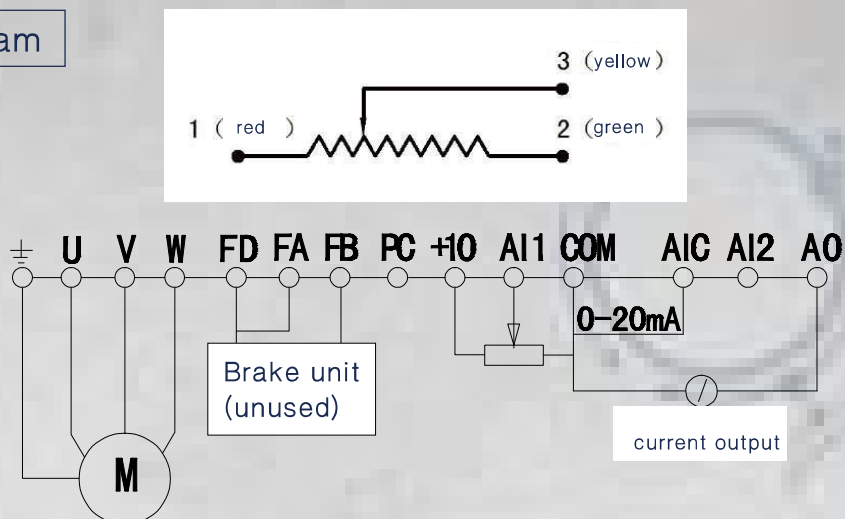


oil





## Wiring diagram



## Size list

单位: mm

Model	ΦD	b	h	L	d	d2	SW
MTTZ -100	100	45	87	20	M20×1.5	Φ6	17
MTTZ -150	100	46	110	20	M20×1.5	Φ6	17
MTTZ -100	112	65	87	20	M20×1.5	Φ6	17
MTTZ -150	160	65	110	20	M20×1.5	Φ6	17

## Demo mode

MTTZ - 150 0~1MPa / M20×1.5

Model	-	Dia	pressure range	/	connection thread
* Resistance teletransmission pressure gauge, 150 bottom install, pressure range 0~1Mpa, thread M20*1.5, if medium, installation.etc were provided, model will be chosen quickly.					

## Order Remarks

Model	/	DIA	/	Installation	/	Pressure Range	/	Connection thread
<input checked="" type="checkbox"/>		<input checked="" type="checkbox"/>		<input checked="" type="checkbox"/>		<input checked="" type="checkbox"/>		<input checked="" type="checkbox"/>

## Safety Warning

To be safe, please choose the right type of product. Wrong choice of product or improper use will likely result in property damage or personal injury. The system designer and the user shall be fully responsible for choosing the right products and use the product in the correct way.



## Differential Teletransmission Pressure Gauge



Differential Teletransmission  
Pressure Gauge  
Order Number:MT106405111



Differential Teletransmission  
Pressure Gauge  
Order Number:MT106405111



Differential Teletransmission  
Pressure Gauge  
Order Number:MT106405111

### Application :

Differential far eastone pressure gauge is a two wire safe explosion-proof instrument.Used to measure corrode the copper and its alloy liquid,gas,and steam pressure.Instrument after wearing damping liquid,can measure pulse pressure,impact,sudden unloading medium. This instrument in addition to the in situ stress indicator,also measured pressure signal into a linear continuous output and 4 ~ 20 ma dc signal.With the D DZ- III the electric unit combination instrument display, record, the adjustment of instrument combination, automatic recording, and adjusting and control system. Applicable to petrochemical industry, metallurgy,power, light industry and other departments, especially widely used in constant pressure water supply.

### Main parameters :

DIA: 150mm

Accuracy grade :1.6%

Working pressure :

Steady:3/4x full scale value

Fluctuating:2/3×full scale value Short time:Full scale

Transmission mode:double-line mode

Output signal: 4 ~ 20mA

Working voltage :DC24V

Connection Thread:M20×1.5、 PF(PT、 NPT)1/2

Bourdon tube:tin-phosphor bronze tube

Connection material:bronze alloys

Movement :bronze alloys

Casing : Aluminum alloy die-casting

Glass :common

## Operation

- The electrician person can operate.
  - Debugging or switch control interval, control circuit should disconnects, after that, it is power on.
  - Carefully reading manual before use.
  - With a sharp pressure changes or vibration environment. Pulse environment protection device shall be added.
  - The pressure gauge must be installed vertically and tightened by a wrench.
  - Pressure gauges shall be horizontal or vertical installation.
  - Measurement with explosion danger, easy to crystallization, easy solidified, corrosion resistance requirements, special medium measuring instrument should be used.
  - Used at an ambient temperature between  $-40^{\circ}\text{C} \sim +70^{\circ}\text{C}$  with a relative humidity not exceeding 85%.

## Model Number Codes

Any special requirements pls confirm with technician.

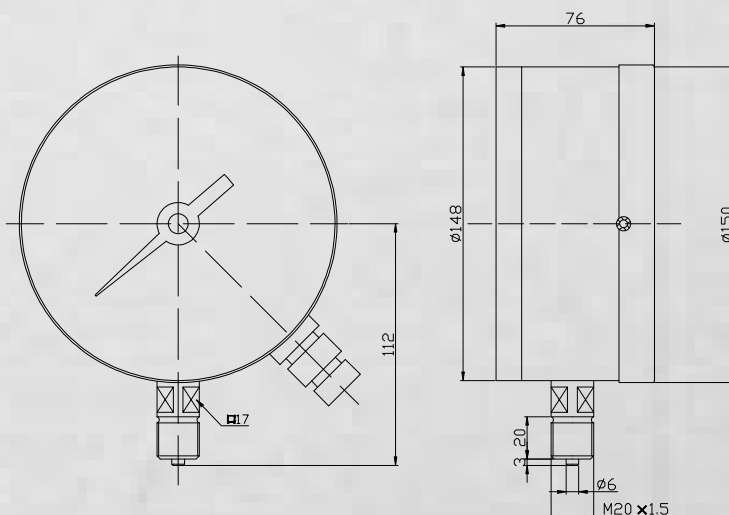


TT -	1	2
Differential far eastone	DIA	Installation
	Φ 150mm	blank: bottom

## Pressure range、 accuracy grade

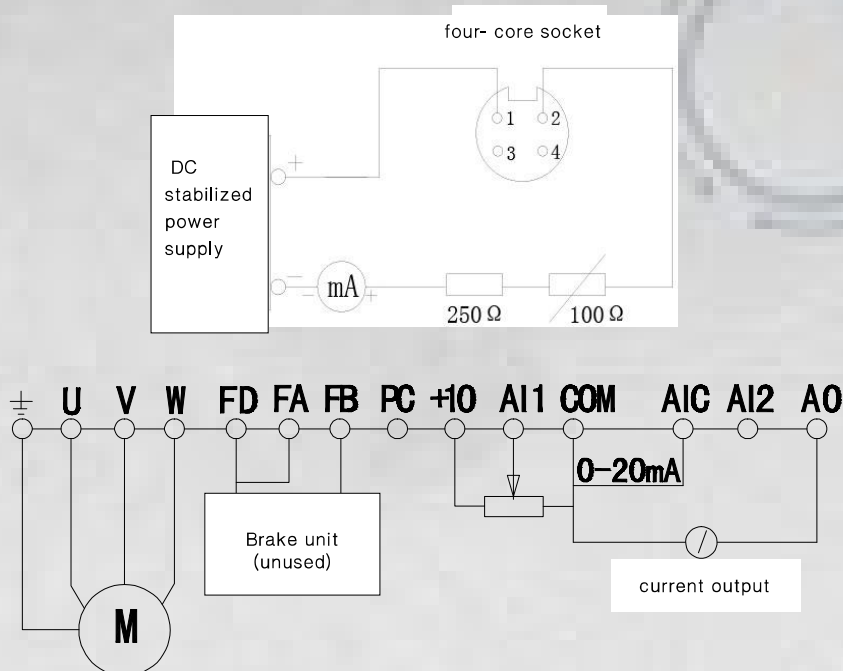
Product name	model	pressure range (MPa)	accuracy grade (%)	connection thread
Differential far eastone pressure gauge	MTTT -150	0~ (0.1/0.16/0.25/0.4/0.6/1/1.6/2.5/4/6/10) -0.1~0	1.6	M20×1.5

## Boundary dimension





## Wiring diagram



## Demo mode

MTTT - 150 0~1MPa / M20×1.5

Model	-	Dia	pressure range	/	connection thread
* Differential far eastone pressure gauge, 150 bottom install, pressure range0~1Mpa, thread M20*1.5, if medium, installation.etc were provided, model will be chosen quickly.					

## Order Remarks

Model

/

DIA

/

Installation

/

Pressure  
Range

/

Connection  
thread

## Safety Warning

To be safe, please choose the right type of product. Wrong choice of product or improper use will likely result in property damage or personal injury. The system designer and the user shall be fully responsible for choosing the right products and use the product in the correct way.



## Heat-Resistant Pressure Gauge



Heat-Resistant Pressure Gauge  
(stainless steel radiator)  
Order Number:MT115406111

### Application:

The High-temperature-proof pressure gauge is suitable for the petrochemical industry of heat-resistant corrode the copper and its alloys of high temperature gas, liquid pressure measurement, such as polyethylene, high temperature and high pressure molding in the plastics industry, chemical fiber industry of high temperature cocoons, self-inspection of desulfurization of petroleum industry and chemical industry, etc

### Main parameters:

DIA: 100mm、 150mm

Working pressure :  
Steady:  $3/4$  x full scale value  
Fluctuating:  $2/3$  x full scale value  
Short time: Full scale value

Connection Thread: M14×1.5、 M20×1.5

Bourdon tube: SUS304, SUS316

Connection material:  
HPb59-1、 SUS304、 SUS316

Welding manner :  
Silver soldering, argon arc welding

Medium temperature :  
150-250 degree Celsius with brass radiator;  
250-400 degree Celsius with stainless steel radiator

Casing :  
spraying steel case, stainless steel SUS304

Glass: common, tempered glass



Heat-Resistant Pressure Gauge  
(brass radiator)  
Order Number:MT115105111

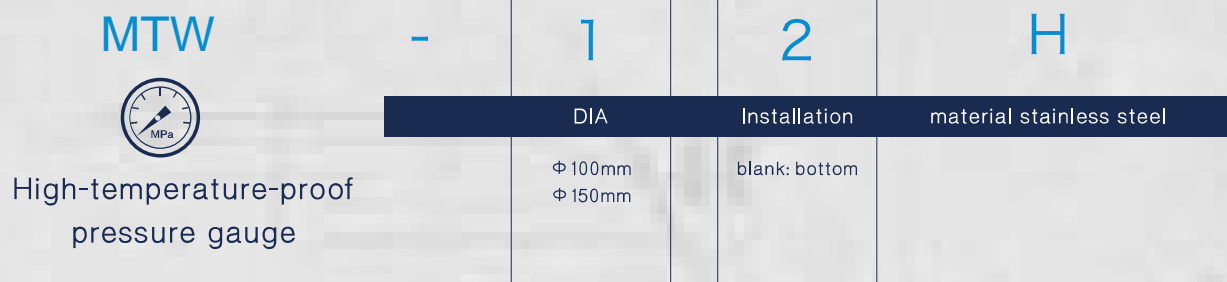


## Operation

- Carefully reading manual before use.
- With a sharp pressure changes or vibration environment. Pulse environment protection device shall be added.
- The pressure gauge must be installed vertically and tightened by a wrench.
- Pressure gauges shall be horizontal or vertical installation.
- Measurement with explosion danger, easy to crystallization, easy solidified, corrosion resistance requirements, special medium measuring instrument should be used.
- Used at an ambient temperature between  $-40^{\circ}\text{C}\sim+70^{\circ}\text{C}$  with a relative humidity not exceeding 85%.

## Model Number Codes

Any special requirements pls confirm with technician.



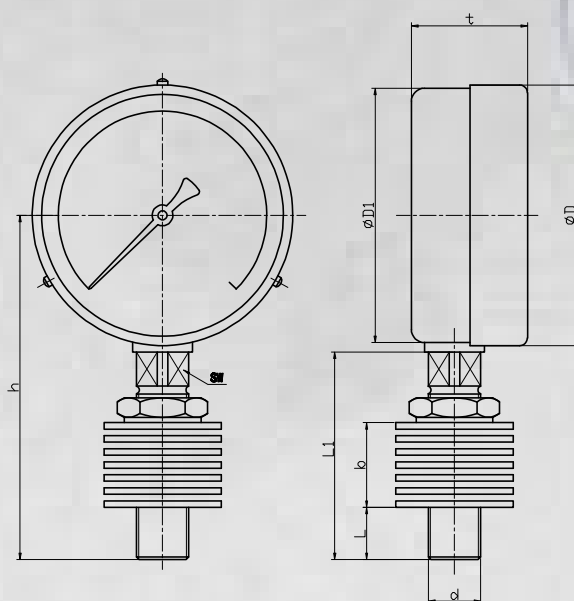
## Pressure range、 accuracy grade

model	pressure range (MPa)	accuracy grade (%)	connection thread
MTW -100 MTW -150	0~ (0.16/0.25/0.4/0.6/1/1.6/2.5/4/6/10/ 16/25/40/60)	1.6	M20×1.5

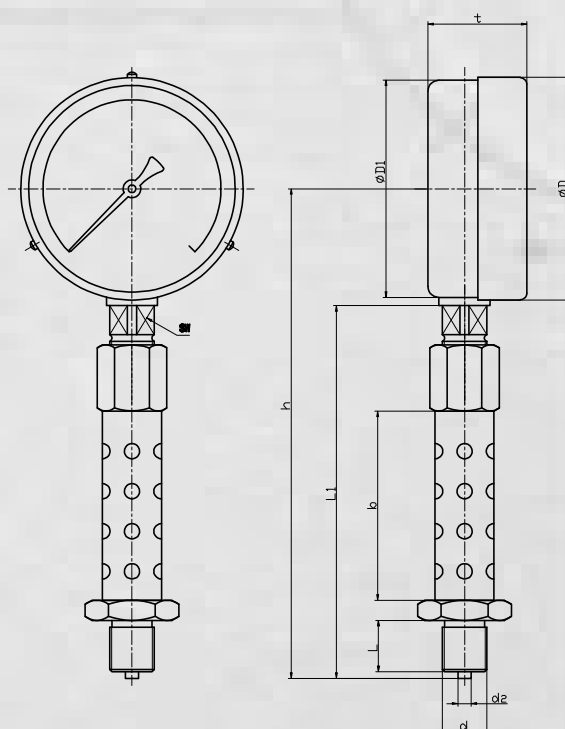




Boundary dimension



Bottom (brass radiator)



Bottom (stainless steel radiator)



## Size lists

单位: mm

model	ΦD	ΦD1	t	h	L1	L	b	d2	SW
MTW-100 Brass radiator	100	98	45	120	85	18	32.5	-	17
MTW -100 S.S radiator	100	98	45	210	160	18	90	6	17
MTW-150 Brass radiator	150	148	46	112	85	18	32.5	-	17
MTW -150 S.S radiator	150	148	46	240	160	18	90	6	17

## Demo mode

MTW - 100 0~1MPa / M20×1.5

Model - Dia pressure range / connection thread

\* High-temperature-proof pressure gauge, bottom install, pressure range 0~1Mpa, thread M20\*1.5

## Order Remarks

Model

/

DIA

/

Installation

/

Pressure  
Range

/

Connection  
thread

## Safety Warning

To be safe, please choose the right type of product. Wrong choice of product or improper use will likely result in property damage or personal injury. The system designer and the user shall be fully responsible for choosing the right products and use the product in the correct way.



## Shock-Resistant Pressure Gauge



Shock-Resistant Pressure Gauge  
Order Number:MT123320132



Shock-Resistant Pressure Gauge  
Order Number:MT123305732



Shock-Resistant Pressure Gauge  
(back with front fronge)  
Order Number:MT123312732

### Application :

Shock-proof pressure gauge is mainly used in metallurgy, electric power, petroleum, chemical industry, light industry, machinery and other industrial departments of stress testing. Pressure gauge relies on internal filling damping liquid and supporting device, to reduce the effect of fluctuating pressure or the machine vibration, shock-proof pressure gauge has a good seismic performance, apply to the measured medium pressure which has a strong impact or pressure pulse change and often sudden unloading occasion in the production process, and place of environmental vibration is larger, the instrument is suitable for the measurement of copper alloy no corrosive effect of gas, liquid pressure fluctuations, internal damping design can ensure the accuracy of the readings.

### Main parameters :

Dia: 60mm、 100mm、 150mm

Working pressure :

Working pressure: Steady:  $3/4 \times$  full scale

value Fluctuating:  $2/3 \times$  full scale value

Short time: Full scale value

Connection Thread :

M14×1.5、 M20×1.5、 PF(PT、 NPT)1/4、 PF(PT、 NPT)1/2

Damping Liquid: methylsilicone

Bourdon tube : phosphor bronze

Connection material: copper alloy or copper alloy chromeplate

Movement: copper alloy

Casing : SUS804

Glass: PC, stalinite



## Operation

- With a sharp pressure changes or vibration environment. Pulse environment protection device shall be added.
- The pressure gauge must be installed vertically and tightened by a wrench.
- Measurement of oxygen, acetylene, hydrogen, or other combustible gas should be chosen with ban oil logo pressure gauge.
- Pressure gauges shall be horizontal or vertical installation.
- Measurement with explosion danger, easy to crystallization, easy solidified, corrosion resistance requirements, and special medium measuring instrument should be used.
- The pressure gauge is to be used at an ambient temperature between  $-35^{\circ}\text{C}\sim+70^{\circ}\text{C}$  with a relative humidity not exceeding 85% (close to the lowest temperature will affect the normal work of the instrument).

## Model Number Codes

Any special requirements pls confirm with technician.



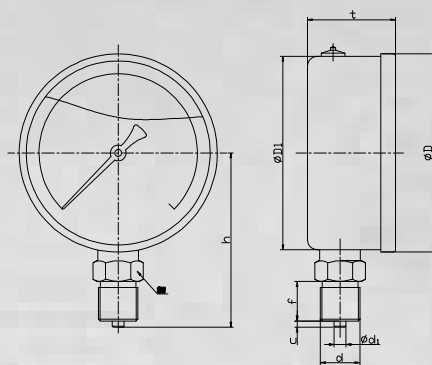
1	2
DIA	Way to install
$\Phi 60\text{mm}$ $\Phi 100\text{mm}$ $\Phi 150\text{mm}$	Blank-bottom Z-back ZT-back and flange

## Pressure range、 accuracy grade

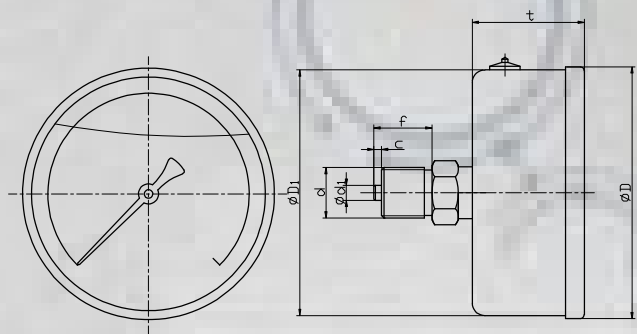
model	pressure range (MPa)	accuracy grade (%)	connection thread
MTN -60(Z/ZT)	0~ (0.1/0.16/0.25/0.4/0.6/1/1.6/2.5/4/6/ 10/16/25/40/60) -0.1~ (0/0.15/0.3/0.5/0.9/1.5/2.4)	2.5	M14×1.5
MTN -100(Z/ZT) MTN -150(Z/ZT)	0~ (0.1/0.16/0.25/0.4/0.6/1/1.6/2.5/4/6/ 10/16/25/40/60) -0.1~ (0/0.15/0.3/0.5/0.9/1.5/2.4)	1.6	M20×1.5



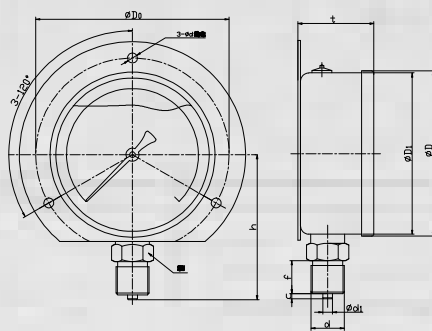
## Boundary Dimension



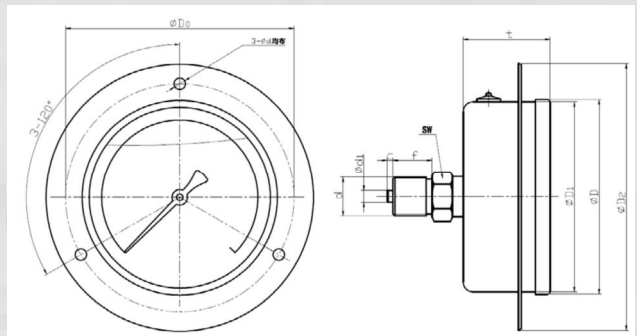
Bottom



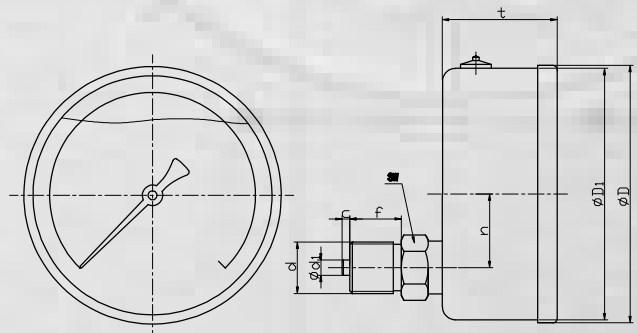
Back ( Middle)



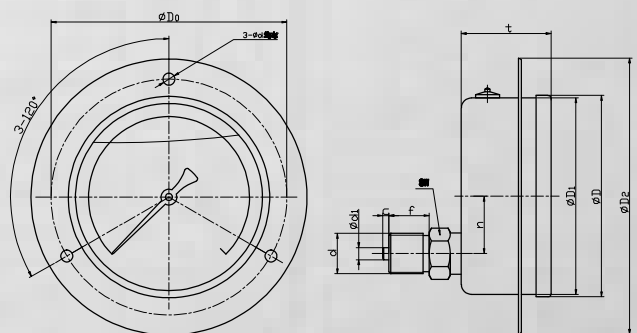
Bottom (Geman-style)



Back (Middle, front flange)



Back (below)



Back (below, front flange)



## Size list

单位: mm

Model	ΦD	ΦD0	ΦD1	ΦD2	n	t	h	f	c	Φd	Φd1	SW
MTN -60	63	-	72	-	-	34	53	14	3	-	5	15
MTN -60Z	63	-	72	-	-	32	20	14	3	-	5	15
MTN -60ZT	60	72	67	84	-	30	20	14	3	5	5	15
MTN -100	100	-	98	-	-	35	87	20	3	-	6	22
MTN -100Z	100	-	98	-	30	42	35	20	3	-	6	22
MTN -100ZT	100	118	98	134	30	42	35	20	3	6	6	22
MTN -150	150	-	148	-	-	45	112	20	3	-	6	22
MTN -150ZT	160	165	148	182	30	65	35	20	3	6	6	17

## Demo mode

MTN - 100 ZT 0~1MPa / M20×1.5

Model - Dia stainless steel material pressure range / connection thread

\* S.S shock-proof pressure gauge, bottom connection, pressure range: 0~1MPa, thread M20\*1.5  
Model will be quickly chosen if medium and installation is provided.

## Order Remarks

Model

/

DIA

/

Installation

/

Pressure Range

/

Connection thread



## Safety Warning

To be safe, please choose the right type of product. Wrong choice of product or improper use will likely result in property damage or personal injury. The system designer and the user shall be fully responsible for choosing the right products and use the product in the correct way.





## Stainless Steel Pressure Gauge



Stainless Steel Pressure Gauge  
Order Number:MT13314111



Stainless Steel Pressure Gauge  
Order Number:MT13314711

### Application :

Stainless steel pressure gauge is widely used in petroleum , chemical,chemical fiber,plant in the industrial sector of seismic demand higher measuring various fluid pressure in the process.

### Main parameters :

Dia:  
60mm、 100mm、 150mm

Working pressure :  
Working pressure:Steady:  $\frac{3}{4}$  x full scale value  
Fluctuating;  $\frac{2}{3}$  x full scale value .  
Short time: Full scale value  
Connection Thread:  
M14×1.5、 M20×1.5、 PF(PT、 NPT)1/4 、  
PF(PT、 NPT)1/2

Bourdon tube:  
SUS804、 SUS316L

Connection material:  
SUS304、 SUS316

Movement:SUS304

Casing: SUS304

Glass :PC,stalinite

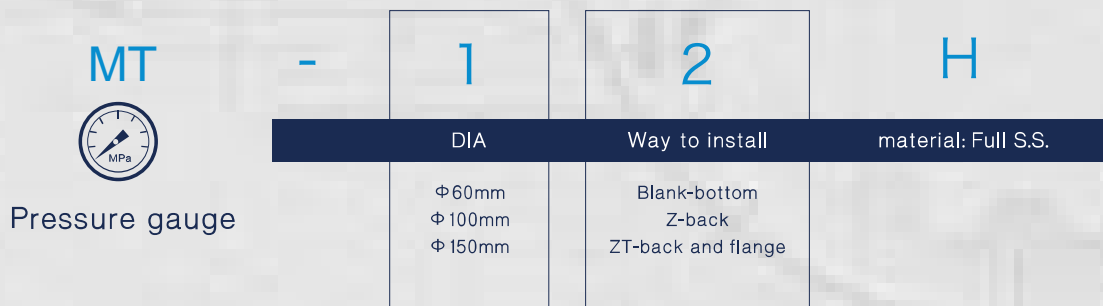


## Operation

- With a sharp pressure changes or vibration environment. Pulse environment protection device shall be added.
- The pressure gauge must be installed vertically and tightened by a wrench.
- Measurement of oxygen, acetylene, hydrogen, or other combustible gas should be chosen with ban oil logo pressure gauge.
- Pressure gauges shall be horizontal or vertical installation.
- Measurement with explosion danger, easy to crystallization, easy solidified, corrosion resistance requirements, and special medium measuring instrument should be used.
- The pressure gauge is to be used at an ambient temperature between  $-40^{\circ}\text{C}\sim+70^{\circ}\text{C}$  with a relative humidity not exceeding 85% .

## Model Number Codes

Any special requirements pls confirm with technician.



## Pressure range、 accuracy grade

model	pressure range (MPa)	accuracy grade (%)	connection thread
MT -60(Z/ZT)H	0~ (0.1/0.16/0.25/0.4/0.6/1/1.6/2.5/4/6/10/16/25/40/60)	2.5	M14×1.5
MT -100(Z/ZT)H MT -150(Z/ZT)H	0~ (0.1/0.16/0.25/0.4/0.6/1/1.6/2.5/4/6/10/16/25/40/60/100) -0.1~ (0/0.15/0.3/0.5/0.9/1.5/2.4)	1.6	M20×1.5



## Size list

单位: mm

Model	ΦD	ΦD0	ΦD1	ΦD2	n	t	h	f	e	c	Φd	Φd1	SW
MT -60H	60	-	58	-	-	29	53	14	2	3	-	5	14
MT -60HZ	60	-	58	-	-	29	20	14	2	3	-	5	14
MT -60HZT	60	72	-	84	-	29	20	14	2	3	5	5	14
MT -100H	100	-	98	-	-	45	87	20	2	3	-	6	17
MT -100HZ	100	-	98	-	30	45	35	20	2	3	-	6	17
MT-100HZT	100	118	98	132	30	45	35	20	2	3	6	6	17
MT -150H	150	-	148	-	-	46	112	20	2	3	-	6	17
MT -150HZT	150	165	148	182	30	46	35	20	2	3	6	6	17

## Demo mode

MT - 100 H 0~1MPa / M20×1.5

Model - DIA material pressure range / connection thread

\* S.S shock-proof pressure gauge, bottom connection, pressure range: 0~1MPa,thread M20\*1.5 Model will be quickly chosen if medium and installation is provided.

## Order Remarks

Model

/

DIA

/

Installation

/

Pressure Range

/

Connection thread



## Safety Warning

To be safe, please choose the right type of product. Wrong choice of product or improper use will likely result in property damage or personal injury. The system designer and the user shall be fully responsible for choosing the right products and use the product in the correct way.



## Pressure Gauge for Ammonia



Pressure Gauge for Ammonia  
Order Number:MT133311111

### Application:

Ammonia pressure gauge is used to measure of ordinary carbon steel, alloy steel and austenitic stainless steel and alloy steel lead soldering material non-corrosive effect, non-crystalline and solidification of the pressure of all kinds of medium. mainly used in fertilizer production process and refrigeration equipment used to measure the ammonia liquid, gas or mixture of pressure.

### Main parameters:

60mm、 100mm、 150mm

Dia:

Working pressure:

Working pressure: Steady: 3/4x full  
scale value Fluctuating: 2/3x full scale value.

Short time: Full scale value

Connection Thread :M14× 1.5、 M20×1.5

Bourdon tube:SUS304 or SUS316

Connection material:

chrome plated carbon steel, SUS304 or SUS316

Welding way :argon arc welding

Movement : SUS304 or SUS201

Casing:

Steel 08 F SUS304

Glass:common, stalinite



Pressure Gauge for Ammonia  
Order Number:MT133407112



## Operation

- With a sharp pressure changes or vibration environment. Pulse environment protection device shall be added.
- The pressure gauge must be installed vertically and tightened by a wrench.
- Pressure gauges shall be horizontal or vertical installation.
- Measurement with explosion danger, easy to crystallization, easy solidified, corrosion resistance requirements, and special medium measuring instrument should be used.
- The pressure gauge is to be used at an ambient temperature between  $-40^{\circ}\text{C}\sim+70^{\circ}\text{C}$  with a relative humidity not exceeding 85% .

## Model Number Codes

Any special requirements pls confirm with technician.

MTA



Ammonia  
pressure  
gauge

-

1

DIA

$\Phi 60\text{mm}$   
 $\Phi 100\text{mm}$   
 $\Phi 150\text{mm}$

2

Way to install

Blank-bottom

## Pressure range、 accuracy grade

model	pressure range (MPa)	accuracy grade (%)	connection thread
MTA -60H	0~ (0.16/0.25/0.4/0.6/1/1.6/2.5/4/6)	2.5	M14×1.5
MTA -100 MTA -150	0~ (0.1/0.16/0.25/0.4/0.6/1/1.6/2.5/4/6/ 10/16/25/40/60) -0.1~ (0/0.15/0.3/0.5/0.9/1.5/2.4)	1.6	M20×1.5



## Pressure Gauge for Exporting to South Korea



Pressure Gauge for Exporting to  
South Korea  
Order Number:MT11306121

### Application:

Export-oriented general pressure gauge is suitable for the measurement of copper and its alloy non-corrosive effect of the pressure of gas, liquid and other medium, produce and export all kinds of pressure gauges which have special requirements, such as heat resistance, seismic(oil filled),stainless steel pressure gauge.

### Main parameters:

Dia:  
40mm、 50mm、 60mm、  
75mm、 100mm、 150mm



Pressure Gauge for Exporting to  
South Korea  
Order Number:MT13107111

Working pressure :  
Working pressure: Steady:3/4x full scale  
value Fluctuating: 2/3 x full scale value  
Short time: Full scale value

Connection Thread :  
PF(PT、 NPT)1/8、 PF(PT、 NPT)1/4、  
PF(PT、 NPT)3/8、 PF(PT、 NPT)1/2

Bourdon tube: phosphor bronze,stainless steel



Pressure Gauge for Exporting to  
South Korea  
Order Number:MT13110711

Connection material: copper alloy or stainless steel SUS 304 or sus16

Movement : copper alloy, sus304

Casing : spraying steel case,chroming steel case, SUS304

Glass :PC,stalinite, organic glass





## Operation

- With a sharp pressure changes or vibration environment. Pulse environment protection device shall be added.
- The pressure gauge must be installed vertically and tightened by a wrench.
- Measuring oxygen, acetylene, or other combustible gases should be chosen with oil ban logo pressure gauge.
- Pressure gauges shall be horizontal or vertical installation.
- Measurement with explosion danger, easy to crystallization, easy solidified, corrosion resistance requirements, and special medium measuring instrument should be used.
- The pressure gauge is to be used at an ambient temperature between  $-40^{\circ}\text{C}\sim+70^{\circ}\text{C}$  with a relative humidity not exceeding 85%.

## Model Number Codes

Any special requirements pls confirm with technician.

## Pressure range, class grade

Product name	model	dia	class grade	pressure range (Kgf/cm <sup>2</sup> )
General pressure gauge	MTF-40A	Φ40	3.0	0~1~100
	MTF-40D			
	MTF-50A	Φ50	1.5	0~1~400
	MTF-50D			
	MTF-60A	Φ60	1.5	0~1~400 -76cmHg~-76cmHg+20
	MTF-60BD			
	MTF-75A	Φ75	1.5	0~1~400 -76cmHg~-76cmHg+20
	MTF-75BD			
	MTF-100A	Φ100	1.5	0~1~400 -76cmHg~-76cmHg+20
	MTF-100BD			
	MTF-150A	Φ100	1.5	0~1~400 -76cmHg~-76cmHg+20
Shock-proof pressure gauge	MTN-60A	Φ60	1.5	0~1~400 -76cmHg~-76cmHg+20
	MTN-60B			
	MTN-60BD			
	MTN-60D			
	MTN-75A	Φ75	1.5	0~1~400 -76cmHg~-76cmHg+20
	MTN-75B			
	MTN-75BD			
	MTN-100A	Φ100	1.5	0~1~400 -76cmHg~-76cmHg+20
	MTN-100B			
	MTN-100BD			



## General Pressure Gauge



General Pressure Gauge  
Order Number:MT11305112



General Pressure Gauge  
Order Number:MT13106112



General Pressure Gauge  
Order Number:MT13105712

### Application :

General pressure gauge is suitable for measuring no explosion danger, crystallize, solidify effect on copper and copper alloy non-corrosive liquids, gases and steam pressure of the medium.

### Theory:

Instrument measurement system is made of joint, spring pipe and driving mechanism, indicating device, etc, bourdon tube has the elastic deformation under the action of the pressure causes the displacement of tube end, its displacement amplifier, through mechanical transmission mechanism, indicating device, again by a pointer on the dial engraved with the legal units of measurement points indicate the measured pressure value.

### Main parameters :

Dia:  
40mm、 50mm、 60mm、 100mm、  
150mm、 200mm、 250mm

Working pressure :  
Working pressure: Steady:  $3/4 \times$  full scale value  
Fluctuating:  $2/3 \times$  full scale value.  
Short time: Full scale value

Connection Thread:  
M10 $\times$ 1、 M14 $\times$ 1.5、 M20 $\times$ 1.5、  
PF(PT、 NPT)1/8、 PF(PT、 NPT)1/4  
、 PF(PT、 NPT)1/2

Bourdon tube : phosphor bronze, brass

Connection material: copper alloy

Movement : copper alloy

Casing : spraying steel case

Glass: PC, organic glass



## Operation

- With a sharp pressure changes or vibration environment. Pulse environment protection device shall be added.
- The pressure gauge must be installed vertically and tightened by a wrench.
- Measuring oxygen, acetylene, or other combustible gases should be chosen with oil ban logo pressure gauge.
- Pressure gauges shall be horizontal or vertical installation.
- Measurement with explosion danger, easy to crystallization, easy solidified, corrosion resistance requirements, and special medium measuring instrument should be used.
- The pressure gauge is to be used at an ambient temperature between  $-40^{\circ}\text{C}$ ~ $+70^{\circ}\text{C}$  with a relative humidity not exceeding 85%.

## Model Number Codes

Any special requirements pls confirm with technician.



## Pressure range, class grade

model	dia (MPa)	class grade (%)	pressure range
MT-40(Z)	0~ (0.16/0.25/0.4/0.6/1/1.6/2.5/4/6/10/16)	4.0	M10×1
MT-50(Z)	0~ (0.1/0.16/0.25/0.4/0.6/1/1.6/2.5/4/6/10/16/25/40)	2.5	M14×1.5
MT-60(Z/ZT)	0~ (0.1/0.16/0.25/0.4/0.6/1/1.6/2.5/4/6/10/16/25/40/60) -0.1~ (0/0.15/0.3/0.5/0.9/1.5/2.4)	2.5	M14×1.5
MT-100(Z/ZT) MT-150(Z/ZT)	0~ (0.1/0.16/0.25/0.4/0.6/1/1.6/2.5/4/6/10/16/25/40/60/100) -0.1~ (0/0.15/0.3/0.5/0.9/1.5/2.4)	1.6	M20×1.5
MT-200 MT-250	0~ (0.16/0.25/0.4/0.6/1/1.6/2.5/4/6/10/16/25/40/60/100)	1.6	M20×1.5



## Size list

单位: mm

model	ΦD	ΦD0	ΦD1	ΦD2	n	t	h	f	e	c	Φd	Φd1	SW
MT -40	40	-	39	-	-	25	40	10	2	2	-	4	12
MT -40Z	40	-	39	-	-	25	16	10	2	2	-	4	11
MT -50	50	-	49	-	-	29	48	14	2	2	-	5	14
MT -50Z	50	-	49	-	-	29	20	14	2	2	-	5	14
MT -60	60	-	58	-	-	29	53	14	2	3	-	5	14
MT -60Z	60	-	58	-	-	29	20	14	2	3	-	5	14
MT -60ZT	60	72	-	84	-	29	20	14	2	3	5	5	14
MT -100	100	-	98	-	-	45	87	20	2	3	-	6	17
MT -100T	100	118	98	132	-	45	87	20	2	3	6	6	17
MT -100Z	100	-	98	-	30	45	35	20	2	3	-	6	17
MT-100ZT	100	118	98	132	30	45	35	20	2	3	6	6	17
MT -150	150	-	148	-	-	46	112	20	2	3	-	6	17
MT-150ZT	150	165	148	182	30	46	35	20	2	3	6	6	17
MT -200	200	-	198	-	-	50	137	20	2	3	-	6	17
MT -250	250	-	248	-	-	50	163	20	2	3	-	6	17

## Demo mode

MT - 100 0~1MPa / M20×1.5

Model - Dia pressure range / connection thread

\* General pressure gauge, radial installation, 0 to 1 mpa, threaded M20 \* 1.5, if can provide the measurement information such as the medium, the installation conditions more quickly accurate selection for our customers.

## Order Remarks

Model

/

DIA

/

Installation

/

Pressure Range

/

Connection thread



## Safety Warning

To be safe, please choose the right type of product. Wrong choice of product or improper use will likely result in property damage or personal injury. The system designer and the user shall be fully responsible for choosing the right products and use the product in the correct way.



## Demo mode

MTZ288 - 150 0~120°C / 5m M27×2

Model number - diameter measuring range / capillary length connection thread

\* Electric contact pressure type thermometer 150mm bottom install measuring range 5 meters thread M27x2

## Ordering instruction

Model

/

Diameter

/

measuring range

/

Connection thread



/

bulb size

/

length of the capillary



## Safety Warning

To be safe, please choose the right type of product. Wrong choice of product or improper use will likely result in property damage or personal injury. The system designer and the user shall be fully responsible for choosing the right products and use the product in the correct way.